

# Welcome to BCP – BioCarbon Partners

*Making Conservation of Wildlife Habitat Valuable to People.*

BCP is a Zambian-founded climate solutions company working in Zambia and Mozambique to protect forests, fight climate change, and improve lives.

As a regional trailblazer in community-led climate action, we understand that in order to address deforestation, we have to look deeper and tackle the root causes linked to the economic and social reasons behind deforestation. We take a holistic approach to understand the link between poverty, environmental degradation and climate change. When communities have an incentive to protect their forests and wildlife, it is a win for the communities, a win for biodiversity, and a win for our planet!

**R**educing  
**E**missions (from)  
**D**eforestation (and)  
**D**egradation  
+ **the role of conservation, sustainable management of forests and enhancement of forest carbon stocks**

## Our REDD+ Impact Model



BCP partners with local communities, the Forestry Department, and the Department of National Parks and Wildlife to implement **REDD+ (Reducing Emissions from Deforestation and Forest Degradation)** projects that directly benefit over **230,000** people. BioCarbon Partners (BCP) is one of Africa's leading REDD+ project developers, delivering award-winning, community-driven forest conservation in Zambia and Mozambique. Our REDD+ projects have the potential to support over half a million people and help protect nearly 5 million hectares of high-

value forests across the region, while advancing climate resilience and sustainable rural development. delivering access to clean water, educational support, climate-smart agriculture, and sustainable livelihoods.

Our conservation efforts focus on protecting some of the most carbon-rich and biodiverse forests in Africa, including critical wildlife corridors and national parks. By combining local knowledge with global best practices, BCP empowers communities to lead the way in reducing deforestation, restoring ecosystems, and protecting endangered species.



# Where Do We Work?

Our landscape portfolio includes the Luangwa Community Forests Project (LCFP), the Lower Zambezi REDD+ Project (LZRP), the Kafue-Zambezi Community Forest Project (KZCFP), and the Greater Limpopo REDD+ Project (GLRP). Together these initiatives conserve millions of hectares of globally significant wildlife habitat across Zambia and Mozambique and help maintain critical wildlife corridors.

## Triple Action - CCB

### Community

Local jobs, climate-smart agriculture, eco-charcoal alternatives, community scouts, education, water, and health improvements.



### Biodiversity

Protection of wildlife corridors and core ecosystems for elephants, big cats, wild dogs, and diverse birdlife.

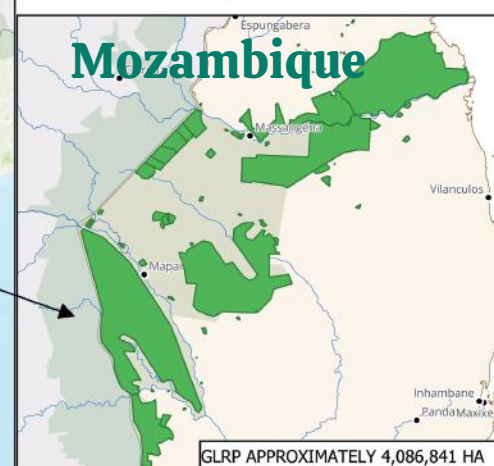
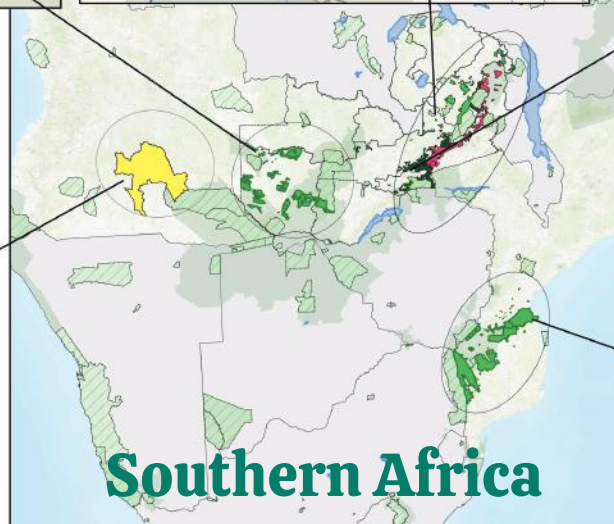
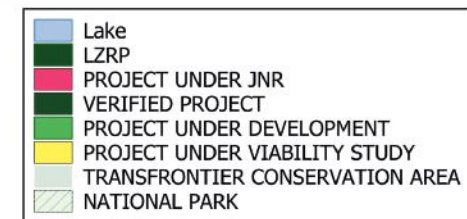
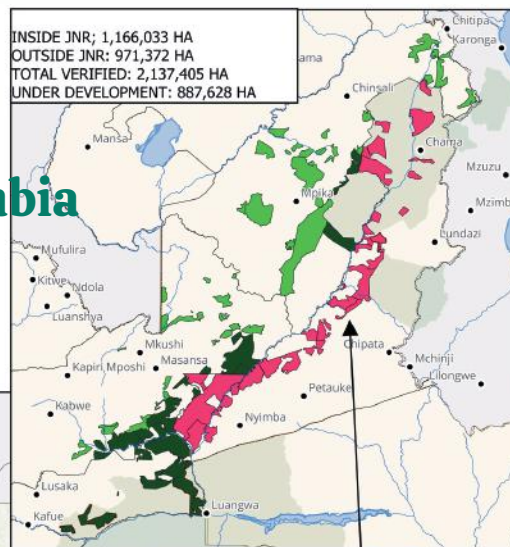
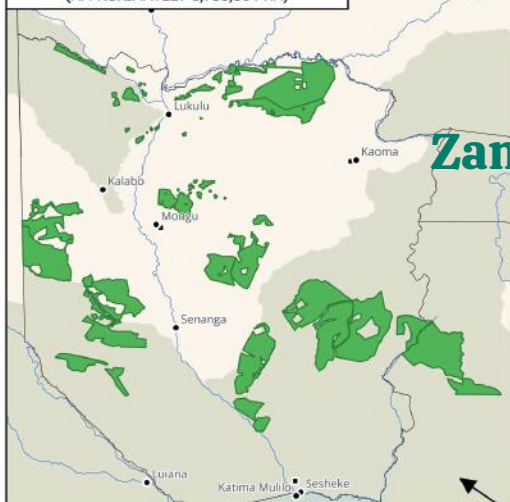


### Climate

Verified carbon reductions that align with national climate goals and contribute to global mitigation efforts.



KAFUE-ZAMBEZI COMMUNITY FORESTS PROJECT  
(APPROXIMATELY 1,738,564 HA)





# Together with Indigenous Communities, We are Bringing the Fight Against Climate Change Home to Africa

There is unequivocal evidence that human activity is driving climate change, as confirmed by the IPCC's AR6. The solution is clear: we must slash emissions, including those from deforestation, and remove carbon already in the atmosphere. The world is fast approaching its limited carbon budget — at current rates, the 1.5°C threshold could be exceeded within the next decade.



**4,776,018**

Hectares under REDD+

**322,469**

Community Beneficiaries

**134,642**

Households benefitting from carbon fees

**\$15,000,000 +**

Distributed to communities since inception.

**420**

Community Impact projects implemented

**268**

Livelihood Projects Implemented

**11,612,492**

Net Estimated Emissions Reductions since inception

Deforestation remains a global problem, accounting for around 11% of annual human-caused emissions. When agriculture and other land use are included, this rises to nearly a quarter of all emissions.

Yet Africa, one of the regions most vulnerable to climate change, receives less than 3% of global climate finance. This is despite the fact that 30 of the 40 most climate-vulnerable countries are in Africa. Rising temperatures, droughts, and water scarcity are already intensifying, placing even greater pressure on food security in regions that already face barriers to accessing food and water.

African countries need more control, greater impact, and superior resources in the global fight against climate change. At BCP, our mission is to work with governments, communities, and partners to put Africa at the forefront of global climate action. Through REDD+ projects, we build resilience, protect biodiversity, and unlock real incentives for communities to conserve their forests.

When communities have a reason to protect their forests and wildlife, it is a win for people, a win for biodiversity, and a win for our planet.

## Livelihood Initiatives

At BCP, *livelihoods are at the heart of conservation. By providing alternatives to deforestation, we create sustainable income opportunities that benefit both people and forests. Our initiatives include:*



### Climate-Smart Agriculture

Helping farmers grow more food on less land, improving food security while reducing pressure on forests.



### Eco-Charcoal

Producing sustainable, affordable fuel that replaces wood-based charcoal, one of the main drivers of deforestation.



### Sustainable Beekeeping

Supporting communities to produce high-quality honey and beeswax sustainably, generating income while protecting vital ecosystems.





## We're Helping To Create One Of Africa's Largest Biodiversity Corridors, Protecting 11 National Parks Across 2 Countries

African species still migrate through large landscapes in Sub-Saharan Africa including endangered species such as elephants, lions, and wild dogs. The Luangwa-Lower Zambezi eco-system is one of the world's last 10 remaining wildlife legacy landscapes on Earth.

Historically, humans have divided land with country borders and National Parks, which in some cases actually isolates wildlife populations, putting them at greater risk of extinction. By protecting threatened areas of biodiversity significance, we're helping to create one of Africa's largest migration corridors, by safeguarding the habitat linking 8 National Parks in Zambia to conserve biodiversity connectivity for Zambia, Malawi, Zimbabwe, and Mozambique.

## We Tackle The Root Causes Of Deforestation And Wildlife Crime At A Community Level To Create Long-Term And Sustainable Change:

**Our REDD+ project areas protect numerous wildlife species at risk of extinction:**

ENDANGERED



**AFRICAN WILD DOG**



**TEMMINCK'S PANGOLIN**



**AFRICAN LEOPARD**



**AFRICAN LION**



**AFRICAN ELEPHANT**



**SOUTHERN GROUND HORNBILL**

VULNERABLE



### UP TO 83% OF RURAL ZAMBIANS FACE CRITICAL POVERTY

Poverty drives deforestation as communities cut forests to generate income from agriculture and charcoal.

Wildlife populations are threatened as a source of food or as an alternative income to vulnerable people, with the international demand for ivory, pangolin scales, and trophies higher than ever before.



### CLIMATE CHANGE THREATENS THE MOST VULNERABLE

Climate change has altered rainfall in Zambia. When rural communities experience severe crop failure due to drought, many supplement their income with forest cutting and illegal hunting.



### BIODIVERSITY

Zambia remains one of the most heavily forested countries in Africa and contains phenomenally diverse and spectacular wildlife legacy landscapes. However, current land-use practices don't generate the resources necessary to effectively conserve these natural resources.