



BCP™

MAKING CONSERVATION OF WILDLIFE HABITAT VALUABLE TO PEOPLE

IMPACT REPORT 2020

A Celebration of what you have helped us achieve in 2020

TABLE OF CONTENT

9 YEARS OF BCP	01
A MESSAGE FROM OUR CEO	02
AN INTRODUCTION TO BCP: WHY ZAMBIA?	03
OUR STORY SO FAR	04
CONNECTING VALUABLE SPACES	05
OUR REDD+ MODEL	06
HOW WE MAKE A DIFFERENCE	07
THE LOWER ZAMBEZI REDD+ PROJECT (LZRP)	08-11
THE LUANGWA COMMUNITY FORESTS PROJECT (LCFP)	12-17
BCP IMPACTS	18
BCP COMMUNITY IMPACTS	19-21
2020-2021 FARMING SEASON	22-23
WOMEN LEADING LIVELIHOODS	24
BCP SUPPORTED COMMUNITY SCOUTS	25-26
BIODIVERSITY IMPACTS LZRP	27-29
BIODIVERSITY IMPACTS LCFP	30
BCP TRUST	31
ECO-CHARCOAL	32-33
CHARGING FOR CONSERVATION	34
COVID-19: OUR RESPONSE TO THE GLOBAL PANDEMIC	35-36
REACHING INTERNATIONAL HEIGHTS	37
ACKNOWLEDGMENTS	38

9 YEARS OF BCP

2012

BCP incorporated and Lower Zambezi REDD+ Project (LZRP) established



2013

LZRP becomes Africa's first Triple Gold CCB validated project; the World's 3rd

BCP, an 18-month-old African startup wins the USAID/CFP for \$14 Million for 5 years

2014

LZRP achieves Verified Carbon Standard (VCS) verification



2015

The Forests Act of 2015 enables Community Forest Management Groups (CFMGs) to control forest rights and have the ability to transfer carbon rights to third parties

2017

BCP is the third highest scoring Certified B Corporation in the World



2018

BCP signs 30-year agreements with 12 Chiefdoms under The Luangwa Community Forests Project (LCFP) covering 944,000 hectares

2019

LCFP CFMGs become the first communities in Zambia to be granted carbon rights from Government



2020

LZRP the world's 1st REDD+ Project to pass 7 successful VCS verifications



Rankings as world's "Best Project Developer – forestry and land use"

BCP announced Runner Up in the 2020 Environmental Finance

2020

ENI, Peace Parks Foundation, and BCP sign Memorandum of Understanding to develop 10 million hectares of REDD+ projects in Africa. ENI and BCP sign 20-year agreement to buy offsets from LCFP

\$4.75 million paid directly to LCFP communities in total since 2017

A MESSAGE FROM OUR CEO

Dear BCP Supporters, Partners, and Stakeholders,

Over the last decade since BCP's incorporation in 2012, together, with the Zambian Government, our community partners, and our conservation partners, BCP has become Africa's largest developer of forest carbon projects by hectares and social impact, and arguably Africa's leading REDD+ project developer.

BCP implements two REDD+ projects: the Lower Zambezi REDD+ Project (LZRP), our "Showcase" project, and the Luangwa Community Forests Project (LCFP), our "Flagship" project, and is a pioneer in using commercial strategies to tackle big social and environmental problems in Zambia, with the aim to scale regionally in Africa.

None of which would be possible without you!

Together, our achievements and strengths include innovation in the forest carbon space, creating impact at scale (close to 1 million hectares of forests under improved management), maintaining high standards of operation, and delivering quality carbon offsets, and currently, we are linking communities in Zambia's rural and highly biodiverse landscapes to global carbon markets.



2020 has been an exceptionally tough year across the Globe, with the impacts of Covid-19 being felt by all of us. Yet, we knew that this was the year that we needed to support our community partners more so than ever before. We have been overwhelmed by the amount of support that we have received from each of you in ensuring that we have been able to continue our mission of making conservation of wildlife habitat valuable to people.

I am excited to use this space to share our very first BCP Impact Report - we hope you enjoy the journey as much as we enjoyed making it!

Sincerely,

Hassan
Sachedina.

AN INTRODUCTION TO BCP WHY ZAMBIA?

Deforestation is a global problem that accounts for an estimated 11% of the world's emissions. Zambia's deforestation is one of the highest in the world. Zambia loses forest four times the size of New York City to deforestation every year. That's an average of 300,000 hectares of valuable wildlife habitat disappearing annually, mainly driven by unsustainable farming techniques and charcoal production. Globally, it is estimated that 23% of human caused greenhouse gas emissions comes from agriculture, forestry, and other land use. As a country as reliant on subsistence and commercial farming as Zambia is, we believe that together with Government and our community partners, that our REDD+ Model, combined with livelihood schemes, such as Climate-Smart Agriculture methods, can really make a difference!



**LOWER ZAMBEZI
REDD+ PROJECT**



BCP™



**LUANGWA COMMUNITY
FORESTS PROJECT**

OUR STORY SO FAR

BCP's proven model keeps Zambian forests standing and brings benefits to communities and wildlife

BCP is a mission-driven social enterprise. Our mission is to make the conservation of wildlife habitat valuable to people. Our goal is to achieve this through a sustainable business model.

If we want to address climate change then action needs to be taken now, or we, as a global community will have missed the opportunity to preserve forests for future generations to come.

At BCP we understand that in order to address deforestation, we have to look deeper and tackle the root causes linked to the economic and social reasons behind deforestation. As a result, across both the LZRP and LCFP a total of 225,000 people are benefiting, and the livelihoods of over 37,000 households are being strengthened through direct payments to communities from revenue from forest carbon fees, employment, and livelihood support.



**LOWER ZAMBEZI
REDD+ PROJECT**



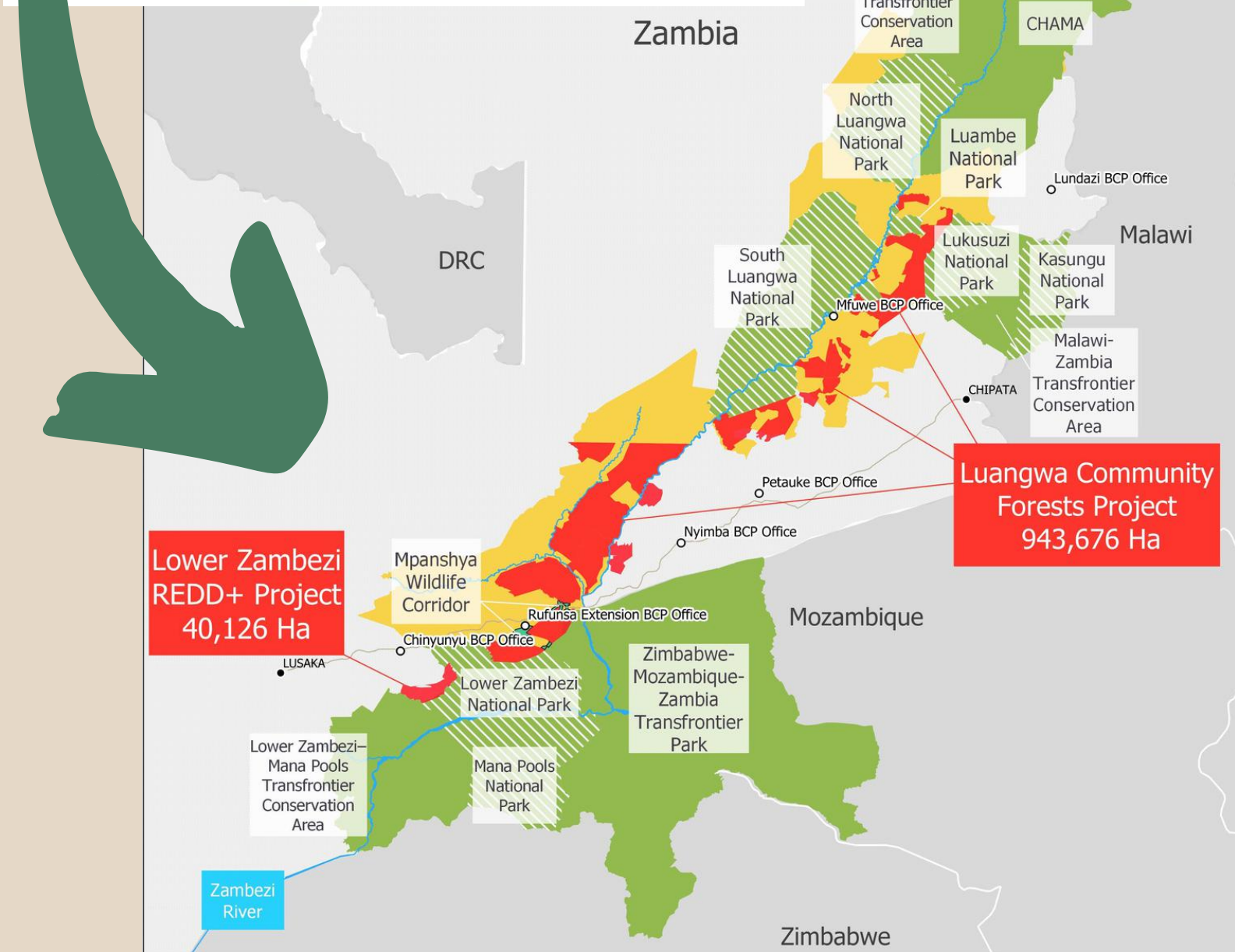
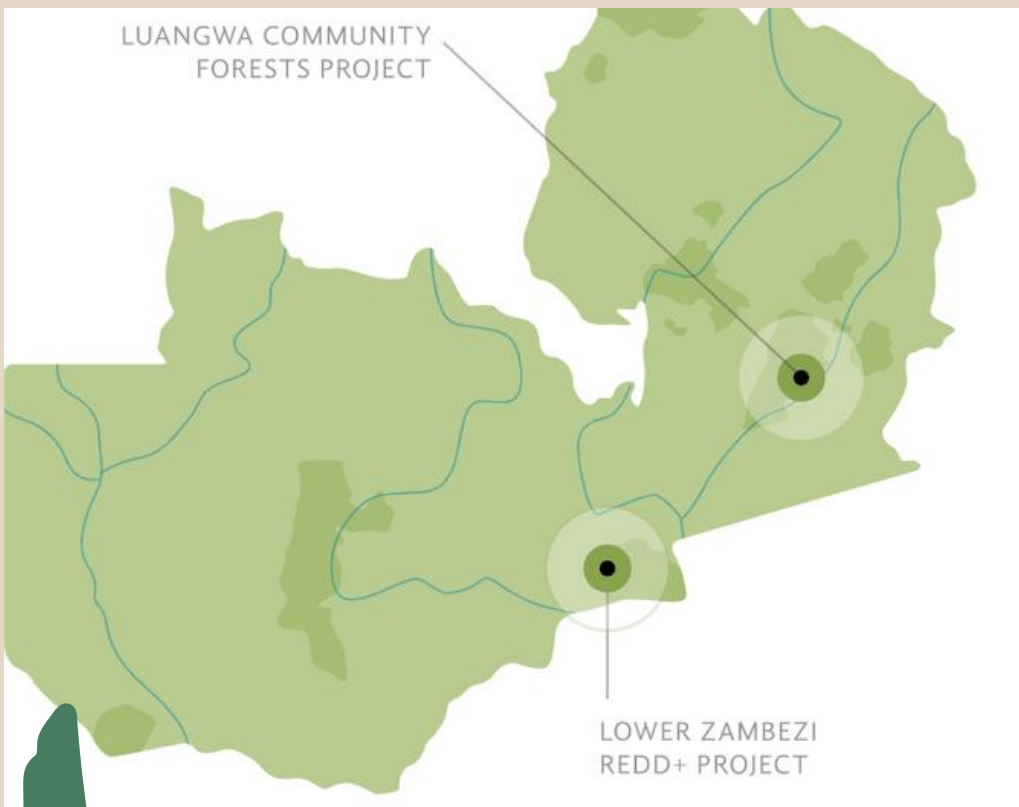
BCP™



**LUANGWA COMMUNITY
FORESTS PROJECT**

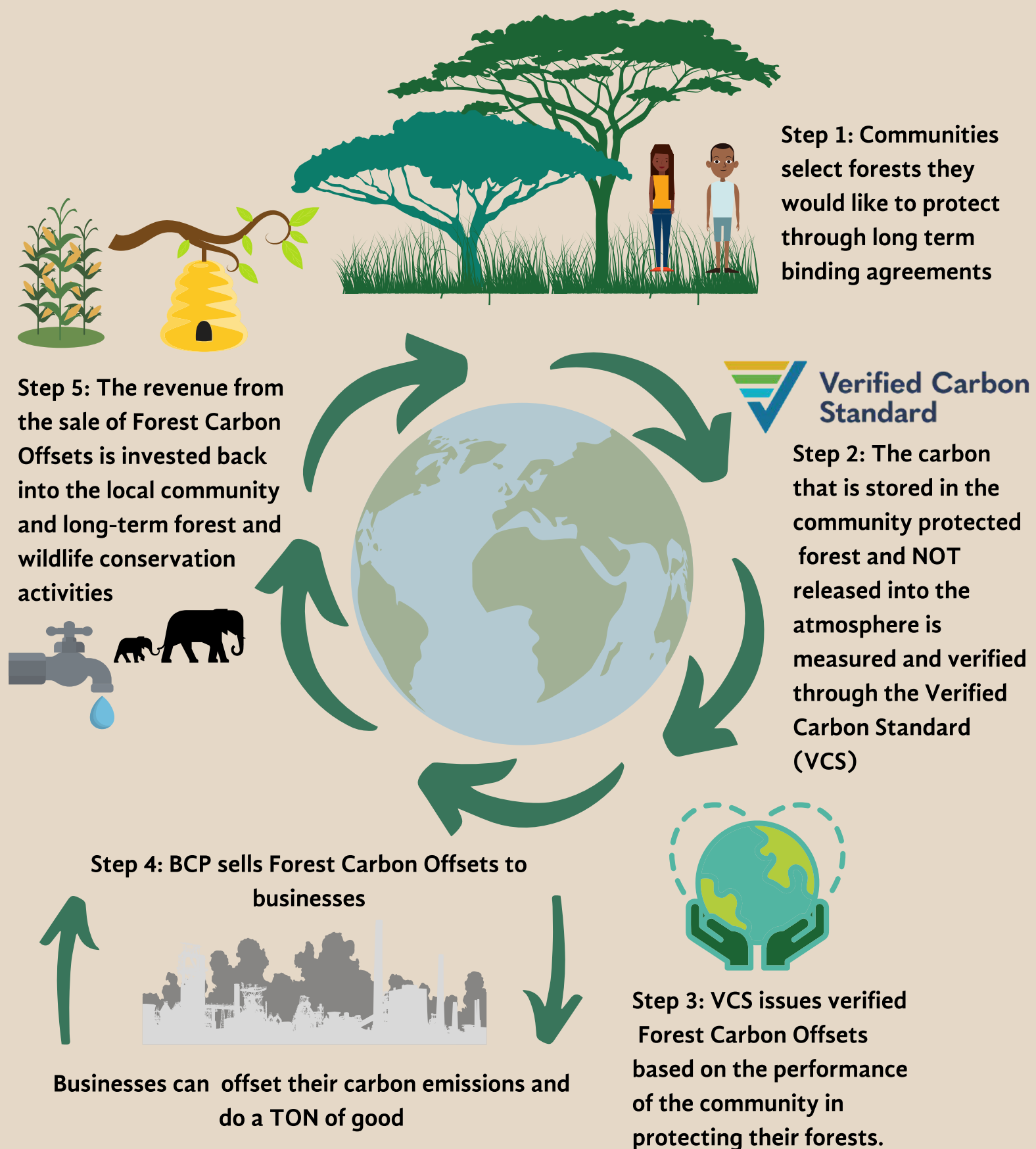
CONNECTING VALUABLE SPACES

By protecting threatened areas of biodiversity significance, we're helping to create one of Africa's largest migration corridors, by protecting the habitat linking 5 National Parks in Zambia to conserve biodiversity connectivity for Zambia, Malawi, Zimbabwe, and Mozambique.

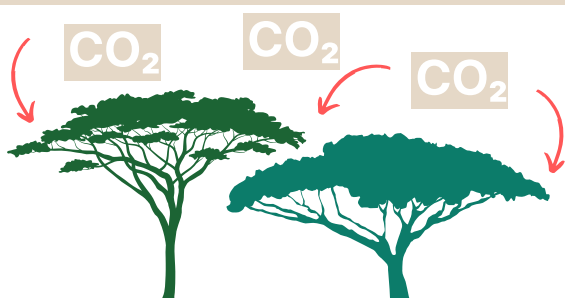


OUR REDD+ IMPACT MODEL

At BCP we take a holistic approach to understand the link between poverty, environmental degradation and climate change



HOW WE MAKE A DIFFERENCE



Step 1

Trees store carbon - when a tree is cut down that carbon is released as carbon dioxide emissions into the atmosphere, contributing to climate change

Step 2

We work hand in hand with communities to help them protect their forests using the BCP model



Step 3

Forest carbon and potential carbon dioxide emissions from deforestation are measured through rigorous scientific processes and verified to the highest standards by independent international auditors



Step 4

We market and sell verified emissions as forest carbon offsets to companies and individuals looking to reduce their carbon footprint



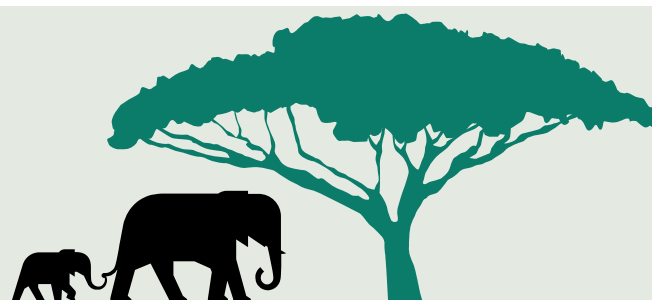
Step 5

Revenue from the sale of offsets is invested back into communities, creating a more prosperous future through sustainable livelihoods and enterprises, and improved access to social services such as education and clean water



Step 6

Communities have an incentive to protect their forests and wildlife



THE LOWER ZAMBEZI REDD+ PROJECT (LZRP)

"THE FIRST REDD+ PROJECT IN THE WORLD TO ACHIEVE 7 SUCCESSFUL VCS VERIFICATIONS"

As the first REDD+ Project in Zambia, the LZRP pioneered the development of forest conservation projects in the country

The LZRP covers Rufunsa Conservancy and protects over 40,000 hectares of threatened Miombo forest in Lusaka Province. The LZRP provides a vital buffer area to The Lower Zambezi National Park, protecting over 60 kilometers of the boundary.



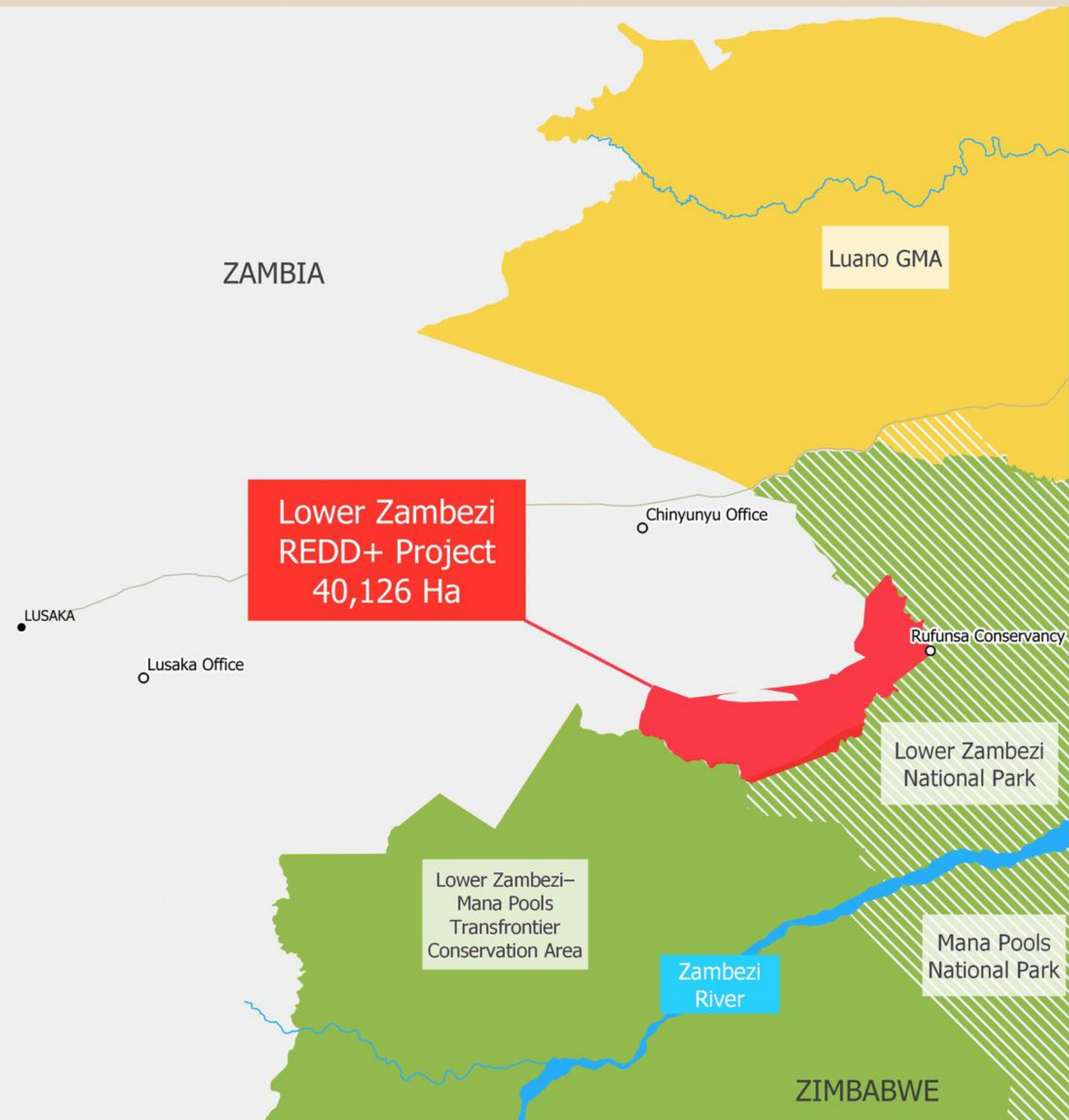
Sable and roan antelope are among many special species found in the LZRP Project area. The Luangwa to Lower Zambezi eco-system is also one of Africa's last 10 lion strongholds, and home to one of the region's largest elephant populations. Although no lion or elephant has yet to return to Rufunsa Conservancy, we look forward to that day!

In cooperation with 7,200 local community members in Bunda Bunda Chiefdom and The Soli Shamifwi Royal Establishment, the project develops sustainable land-use practices that conserve threatened forests and wildlife, while also investing in development for rural communities.

2020 marked an exciting year for LZRP, as we recorded ZERO ENCROACHMENT, proving the success of the REDD+ Model in LZRP.

The Lower Zambezi REDD+ Project is Africa's first CCB Triple Gold Project, with 'Gold' level verification against all three categories of the Climate, Community, and Biodiversity Standard for its exceptional climate change impacts and community and biodiversity benefits.

LZRP PROJECT COVERAGE



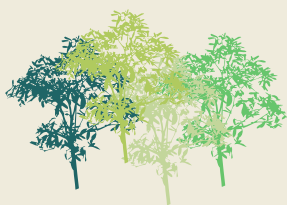
LZRP IMPACTS

The Project partners with 29 villages that make up 4 cooperatives in Bunda Bunda Chiefdom to create extraordinary impacts!

Protects 40,126 Hectares



20,624,764 Estimated trees protected



1,197 Households benefit directly from conservation fees



7,182 Community Beneficiaries



An average of 200,000 tons of carbon dioxide emissions reduced annually, the equivalent of removing 43,000 cars from the road each year



32 Community Impact projects implemented since inception



3,830 beehives hung for sustainable honey production



Currently supports 19 Lead Farmers (3 of whom are female) trained in Conservation Farming techniques and 275 Follower Farmers



23 BCP supported Community Scouts



56% Kwacha increase in annual household income since inception



83 "Charpreneurs" in total are trained in sustainable charcoal production



\$233,355 paid to LZRP communities



The Southern Ground Hornbill is exceptionally important as the 'Trigger Species' for the project. Only one of the nine African savanna hornbill species, the Southern Ground-Hornbill is listed as being of 'conservation concern' by the IUCN (International Union for Conservation of Nature). Its presence in LZRP awards the Project CCB Triple Gold Verification for conservation efforts towards this species.



**Verified Carbon
Standard**



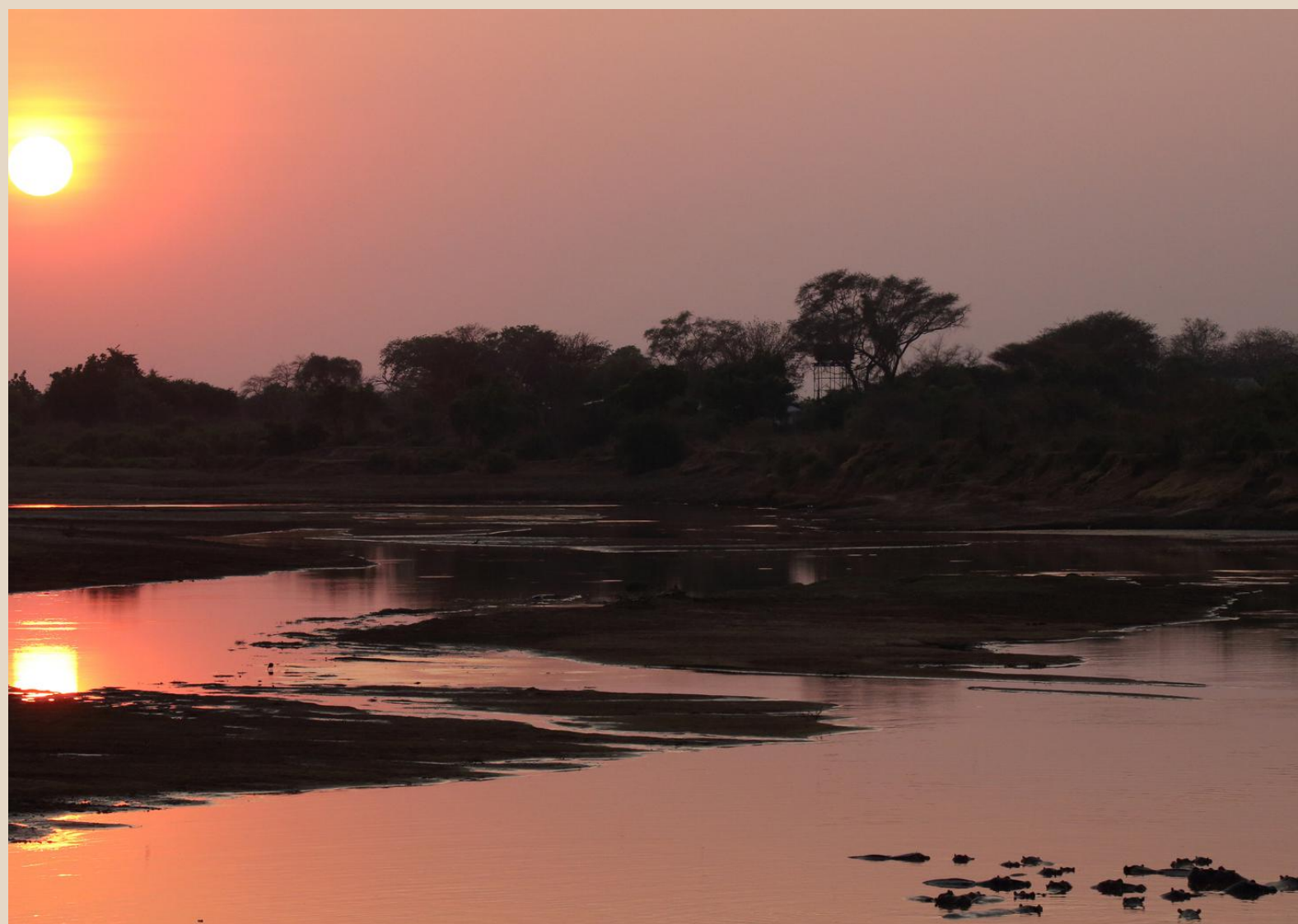
**LOWER ZAMBEZI
REDD+ PROJECT**

CCB Standards
The Climate, Community & Biodiversity Standards

THE LUANGWA COMMUNITY FORESTS PROJECT (LCFP)

"THE LARGEST REDD+ PROJECT IN AFRICA"

Protecting close to 1 million hectares of forest, the LCFP is the largest REDD+ Project in Africa, and arguably, the largest in the World in terms of quantified social impact. The project benefits over 217,000 people in some of Zambia's most impoverished provinces through income generation and social services development.



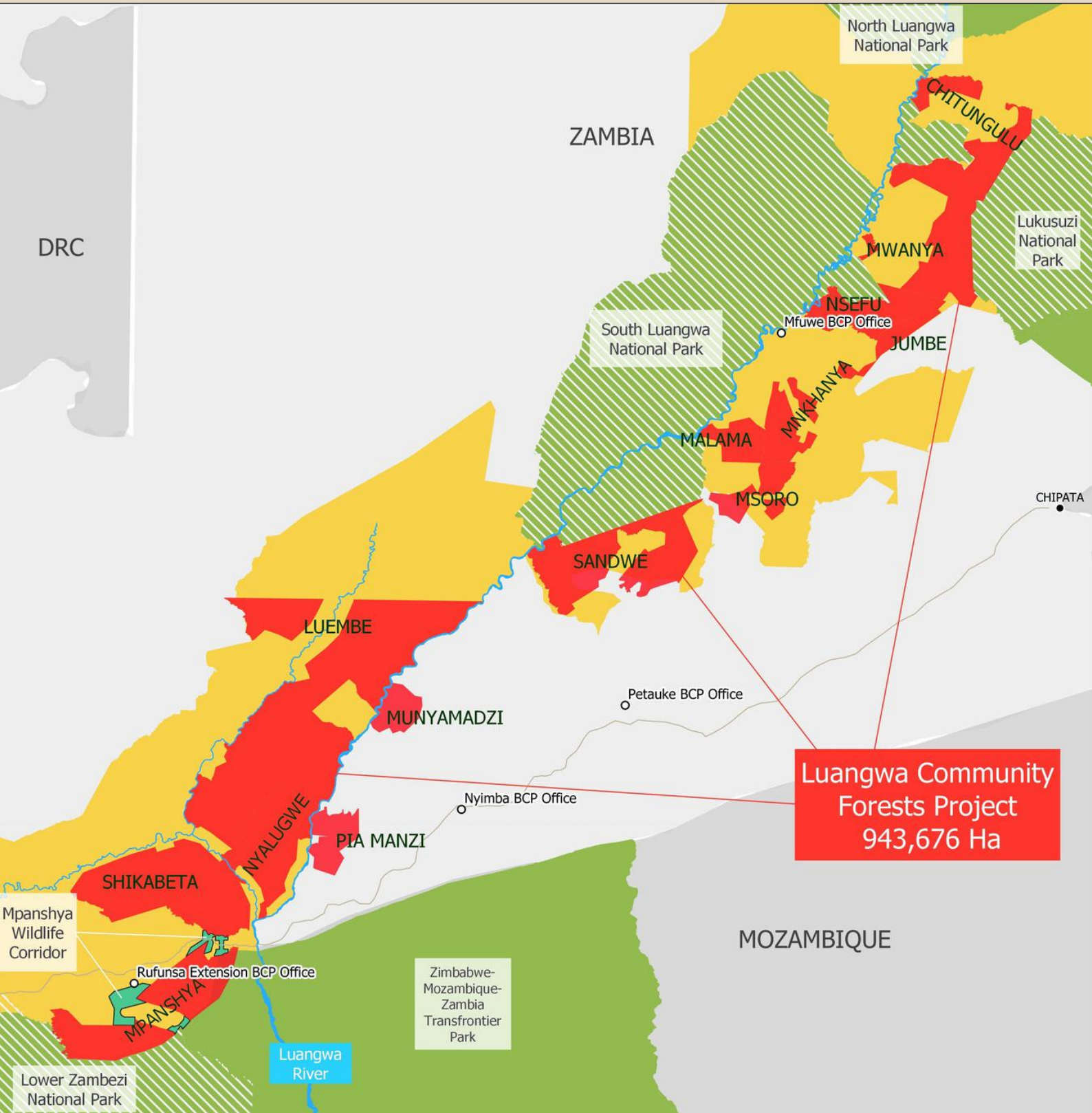
The Luangwa Valley is one of the greatest wildlife strongholds remaining on Earth; home to African wild dogs, elephants, leopards, and lions.

The Luangwa River, one of Africa's longest undammed free-flowing rivers, is a pivotal lifeline to one of the richest wildlife concentrations on earth. The valley topography presents breathtaking beauty in the landscape while also keeping wildlife population density in the area high, resulting in a strong tourism industry that contributes significantly to Zambia's economy.

The LCFP works to address key drivers of deforestation while also benefitting local communities by reducing poverty, creating sustainable incomes, improving social services, and encouraging conservation.

The project has been successfully verified twice through the Verified Carbon Standard and has achieved CCB Triple Gold Validation for exceptional community impact.

LCFP PROJECT COVERAGE

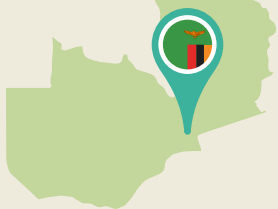




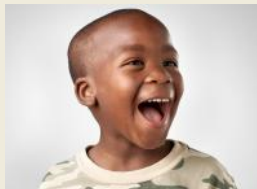
The LCFP acts as an important protective buffer to the South Luangwa, North Luangwa, Luambe, Lower Zambezi, and Lukusuzi National Parks, providing safe habitat and protected migration paths for wildlife. The project creates a contiguous wildlife corridor from the Luangwa to Lower Zambezi Valleys.

LCFP IMPACTS

**217,000 Community
beneficiaries across 12
Chiefdoms**



**36,000 Households' livelihoods enhanced
directly through forest
carbon fees**



**514,303,420 Trees
protected**



**\$4.75 million paid directly
in conservation and
carbon fees to
communities to date**



**2,751 Beehives hung for
sustainable honey
production, creating jobs
for 488 Honey Producers**



**232 Lead
Farmers (70 of
whom are
female) trained
in Conservation
Farming
techniques and
5,800 Follower
Farmers**



**Protects 943,676
Hectares**



**171% Kwacha increase in
annual household income
since inception**

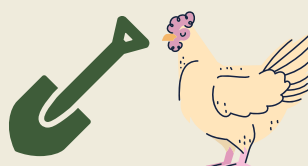


**60 BCP and
partner
supported
Community
Scouts
(including
Munyamadzi
and Pia Manzi
Game
Reserves)**

**An annual reduction of 1.4
million tons of carbon
emissions from being
released, which is the
equivalent of removing
290,000 cars from the
road each year**



**\$578,000 invested in
livelihood projects in
2020**



**The LCFP has created a
minimum of 990
employment opportunities
for individual community
members through
community investment and
projects since 2017**



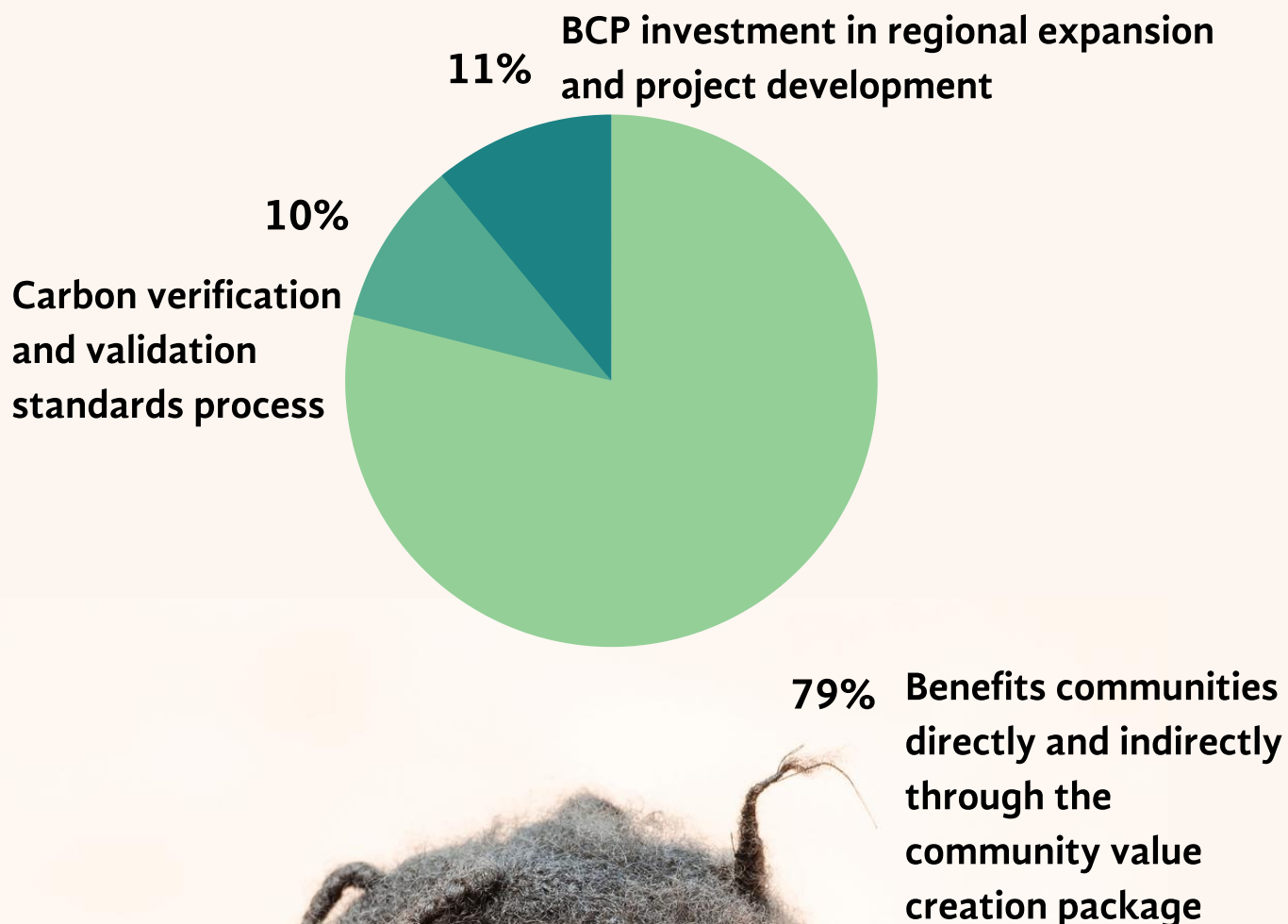
**For every \$1 donor
investment made in
LCFP, the project
generated \$1.2 in new
household income**



**12 Community Forest
Management Groups in
12 Chiefdoms supported
to get Forest Carbon
Rights**



COMMUNITY VALUE CREATION PACKAGE



The Wild Dog is one of the world's most endangered mammals in Africa, and due to its 'endangered' species status, they are the 'Trigger Species' for the LCFP and grants the Project CCB Triple Gold Validation for efforts to protect this species's habitat.



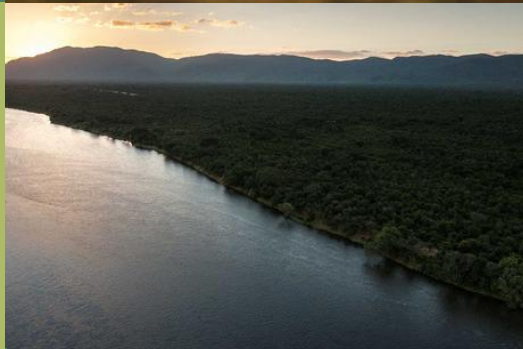
BCP IMPACTS

SINCE 2014, BCP IS ONE OF THE FIRST COMPANIES GLOBALLY TO OFFSET MORE CARBON THAN IT EMITTED SINCE OUR FORMATION = 100% CLIMATE POSITIVE FOR THE PAST 6 YEARS!



IN 2020 WE INCREASED PAY FOR THE LOWEST PAID MEMBERS OF BCP TO 18% HIGHER THAN THE STATUTORY MINIMUM AMOUNT

IN TOTAL, BCP, TOGETHER WITH OUR COMMUNITY AND GOVERNMENT PARTNERS, REDUCED 6,969,896 TONNES OF CARBON FROM BEING RELEASED INTO THE ENVIRONMENT SINCE ITS INCEPTION IN 2012



99% OF OUR STAFF ARE AFRICAN BORN

THAT IS AN ANNUAL AVERAGE REDUCTION OF DEFORESTATION-RELATED EMISSIONS OF 1.6 MILLION TONS OF CARBON DIOXIDE EACH YEAR. THE EQUIVALENT OF REMOVING CLOSE TO 350,000 CARS FROM THE ROAD ANNUALLY



174 PEOPLE ON PAYROLL IN 2020 (INCLUDING LONG-SERVING INDIVIDUAL CONSULTANTS, AND TEACHERS IN LZRP)

WE ARE CREATING JOBS AT COMMUNITY LEVEL, WITH 55% OF OUR EMPLOYEES COMING FROM OUR COMMUNITY PARTNER CHIEFDOMS IN 2020



50% INCREASE OF WOMEN ON PAYROLL IN 2020



CONDUCTED SENSITIZATION AND TRAINING IN EARLY FIRE MANAGEMENT PRACTICES AS PART OF SUSTAINABLE FOREST MANAGEMENT



**LOWER ZAMBEZI
REDD+ PROJECT**



BCP™



18.8



**LUANGWA COMMUNITY
FORESTS PROJECT**

BCP COMMUNITY IMPACTS

LIVELIHOOD PROJECTS 2016-2020



**A TOTAL 37,437
HOUSEHOLDS BENEFIT
DIRECTLY FROM FOREST
CARBON FEES ACROSS
BOTH PROJECTS**

**SUPPORTING ALMOST
225,000 COMMUNITY
MEMBERS ACROSS
BOTH PROJECTS**

**EMPOWERING 6,408
FEMALE HEADED
HOUSEHOLDS**



**7 HAMMERMILLS AND
4 HAMMERMILL
SHELTERS**

**1 SUNFLOWER OIL
EXPELLER**

**105 WASH PROJECTS,
INCLUDING BOREHOLES,
WELLS, LATRINES, AND
HAND PUMPS**



**39 EDUCATION RELATED
PROJECTS = CLASSROOM
REHABILITATION, SOLAR
INSTALLATION, AND WATER
RETICULATION**

**5 BOATS PURCHASED
BY 4 CHIEFDOMS =
ACCESS TO CLINICS
AND LOCAL ECONOMY**

**6 HEALTH FACILITIES
BUILT**

**8 TEACHERS'
SALARIES PAID**



**LOWER ZAMBEZI
REDD+ PROJECT**



BCP™



19.06



**LUANGWA COMMUNITY
FORESTS PROJECT**



WE SHALL CONTINUE TO KEEP OUR FOREST INTACT BECAUSE IT HAS BROUGHT A LOT OF BENEFITS, ONE OF THEM BEING BEEHIVES, WHICH HAVE GIVEN US MONEY TO SEND OUR CHILDREN TO SCHOOL. IT ALSO BRINGS A GOOD ENVIRONMENT TO OUR VILLAGES AS IT HAS GOT A PART TO PLAY IN BRINGING RAINFALL AND GOOD WEATHER ALL AROUND.

MRS. CHARITY CHULU, A BEE-KEEPING FARMER IN CHITUNDA VILLAGE, NSEFU CHIEFDOM

COMMUNITY IMPACTS 2020

Zambia sets global benchmark for community forest conservation



REDD+ sensitization training in LCFP

In 2020 (and again in February 2021), the twelve communities that partner with Government and BCP under The LCFP benefited from a total direct cash payment of over \$4.3 million from forest carbon fees.

2020 has been a tough year due to the pandemic; tourism and conservation funding have declined, but through the extraordinary efforts of our partners such as The Forestry Department, The LCFP channeled a life-changing amount of money into our community partners.

This is just the beginning of a long-term, self-sustainable conservation model that benefits communities and wildlife.

I SHARE BCP'S HIGHER PURPOSE TO CONSERVE NATURAL RESOURCES, AND BEING THE CUSTODIANS OF WILDLIFE AND FOREST RESOURCES IN THE AREA, I TOO AM CONCERNED FOR THE RATE AT WHICH THESE RESOURCES ARE BEING DEPLETED IN OUR COUNTRY.

SINCE OUR PARTNERSHIP WITH BCP BEGAN 2 YEARS AGO, THERE HAVE BEEN SUCH POSITIVE CHANGES. I SEE A MINDSET CHANGE IN OUR PEOPLE, WHICH IS EVIDENT IN THE FOLLOWING: A REDUCTION IN CASES OF HUMAN-WILDLIFE CONFLICT, LOW FINDINGS OF ILLEGAL FISHING, AND A DROP IN DEFORESTATION FOR CHARCOAL AND TIMBER PRODUCTION.

ALL OF THIS PROVES THAT THE PROJECT IS HAVING AN IMPACT.

HIS ROYAL HIGHNESS, CHIEF CHITUNGULU.



2020-2021 FARMING SEASON

Climate-Smart Agriculture

An estimated 60% of Zambia's population depends on subsistence farming for their livelihoods, while globally, subsistence farming accounts for 48% of the world's deforestation! Many farmers in Zambia still use the traditional 'slash and burn' method of farming, which is detrimental to our forests, as it drives the progressive clearing of forests over time for agriculture use. The REDD+ model creates a real opportunity to build a sustainable economy that provides alternative revenue for people so that they do not need to rely on the forests, the illegal wildlife trade, or on tourism to survive. Together with the revenue generated from REDD+, learning the methodology of Climate-Smart Agriculture will secure a sustainable future for people and the environment.

BCP, in collaboration with the Ministry of Agriculture and Livestock, has been working with farmers in an effort to address food security challenges through the farmer to farmer extension model. In an effort to respond to the country's vulnerability to climate change challenges, which directly affects food security in the country, BCP has invested in Climate-Smart Agriculture technologies. With agriculture expansion as such a major threat to the forests, Climate-Smart Agriculture helps to provide food security and a sustainable future for some of Zambia's most nutrition insecure families.

The Benefits of Climate-Smart Agriculture are:



Improved soil nutrition;



Increases the soil organic carbon pool over time;



Promotes improved yields using far less land.



THIS IS AMAZING. SINCE I STARTED CLIMATE-SMART FARMING I HAVE BEEN FOOD SECURE WITH MY FAMILY THROUGHOUT THE YEAR. I HAVE ALSO BEEN PRACTICING CROP ROTATION WITH GROUNDNUTS, DISTRIBUTING THE RISK OF FAILURE OF ONE CROP. I WILL STILL BE ABLE TO HAVE A GOOD HARVEST FROM THE OTHER CROP WHILE MAINTAINING SOIL FERTILITY AT THE SAME TIME. I NO LONGER NEED TO SHIFT MY FIELDS

MR. TEMBO KOSMOS, LEAD FARMER, LUEMBE CHIEFDOM IN ZAMBIA'S LUANGWA VALLEY

FARMING IMPACTS 2020

As part of BCP's Sustainable Agriculture Program, we train and support Lead Farmers in Climate-Smart Agriculture. Each Lead Farmer in turn trains 25 Follower Farmers. Our goal is to build food and nutrition security in communities through the farmer to farmer extension model for years to come.

In 2020, BCP invested over \$145,000 in Climate-Smart Agriculture.

251

**LEAD FARMERS ACROSS
BOTH PROJECTS**

6,275

**FOLLOWER FARMERS
ACROSS BOTH PROJECTS**

73

**FEMALE LEAD FARMERS
ACROSS BOTH PROJECTS**

**106,900 Faidherbia
and Gliricidia trees
were planted in
2020/21 for the
improvement of
crop production**

**We distributed 157
bicycles to Lead
Farmers to help
them train others**

**3,410 Hectares
used for
conservation
farming**

**Each Lead Farmer
received 1 Farming
Input Demo pack
for the 2020/2021
Farming Season**



**Each Lead Farmer
received a raincoat,
gumboots, and a
work-suit**

WOMEN LEADING LIVELIHOODS AGRO-FORESTRY



Mrs. Enny Simufwe is the Lead Agro-forestry Farmer in Mweshang'ombe zone of Bunda Bunda Chiefdom. BCP first came to know Enny in 2013 as one of the earliest trained conservation farmers under the Lower Zambezi REDD+ Project. Today, she leads and supports nine other agroforestry farmers. Through BCP's partnership with the Zambian Ministry of Agriculture and Livestock, Enny has been able to improve her farming practices and increase her groundnut and maize yields using conservation farming techniques. Enny has also planted 78 citrus trees providing not only a source of income but also a source of added nutrition from the fruits.

Enny had a lot to say about her flourishing orchard and its fascinating benefits,

"I planted mangos and oranges for home consumption. It is part of Agro-forestry. The rainfall here is good because of these trees. When we plant these trees, they absorb carbon from the atmosphere and also help with rainfall."

"The Faidherbia albida is used as 'green manure'. The leaves drop in October and November and make the soil so fertile. These leaves are used as medicine for chickens and people and cure about 200 diseases."

Our ambition is to scale up nutrition security in the 13 Chiefdoms that we partner with over the next 36 months. It's an ambitious target, but it's a necessary one. According to Government statistics, some of these community areas have some of the highest poverty and hunger rates in the country. Our goal is to change this through forest protection. In order to live BCP's mission of making conservation of wildlife habitat valuable to people, we have to pursue strong partnerships targeting the most vulnerable households. We are proud that BCP's partnerships with Government are building livelihoods and continuing to improve the livelihoods of women, their communities, and their farmlands and forests, and we are proud of Enny for empowering her family through trees.

WELCOMING DELTA SCOUTS

50 COMMUNITY SCOUTS TO JOIN THE REDD+ TEAM IN 2021

In November 2020, 50 BCP, CRB (Community Resource Boards), and DNPW (Department of National Parks and Wildlife) supported Community Scouts – 16 of whom are female, successfully graduated from an intense 3-month training course through DNPW from Chunga Training Camp in Kafue National Park.

Looking ahead for 2021, of the graduating scouts, 34 will be employed by CRBs in Eastern Province, and 16 in Lusaka Province. BCP, in partnership with The Darwin Initiative, National Geographic Big Cats Initiative, Lion Landscapes, and The Lion Recovery Fund support CRBs to cover the investment into Community Scouts.

THIS IS ONE IMPORTANT WAY OF CONSERVING WILDLIFE BECAUSE IF WE LOOK AFTER OUR FORESTS WE CAN REDUCE THE IMPACTS OF CLIMATE CHANGE. I AM VERY HAPPY TO BE WORKING AT THE FOREFRONT OF HABITAT PROTECTION IN ZAMBIA

JOYCE KAMUNGA, BCP SUPPORTED COMMUNITY SCOUT, PETAUKE, EASTERN PROVINCE



NEW SCOUTS ON THE BLOCK

Once the Delta Scouts officially join BCP's payroll, we will have almost doubled our efforts to support communities to tackle poaching and encroachment in Community Forests. In 2021 Community Scouts will represent over 50% of the people on BCP's payroll, which will mean that 65% of our payroll will come from our partner communities. We are proud to be supporting local communities to provide skilled employment and safeguard habitat in this way. Together, with the Community Scouts from our partners at Munyamadzi and Pia Manzi, BCP will be helping to support a total of 133 Community Scouts in Zambia.

Community Scout operations in REDD+ Zones are paramount to safeguarding the wildlife habitat that BCP strives to protect, which has been made possible through our partnership with DNPW, our partner CRBs, and our conservation partners.

Thank you to all of our donors for your invaluable donations towards wildlife protection in our project areas!



2020 HABITAT PROTECTION IMPACTS:

IN PARTNERSHIP WITH DNPW, 52 POACHERS WERE ARRESTED	12, 941 CONSERVATION DAYS COMPLETED BY COMMUNITY SCOUTS	OVER 13,100 KMS WERE PATROLLED BY COMMUNITY SCOUTS	280 AIRWING HOURS FLOWN TO CARRY OUT AERIAL SURVEILLANCE	173 SNARES REMOVED FROM PROTECTED GAME MANAGEMENT AREAS
--	--	--	--	--

BIODIVERSITY IMPACTS LZRP

WATCHING WILDLIFE RETURN TO RUFUNSA

A picture speaks a thousand words... and we think the Camera Trap diaries do just that

2020 was our year to prove the link between protecting forests in LZRP and the increase of wildlife in the area. The correlation between zero encroachment and the return of wildlife to Rufunsa is clear. This year, in partnership with Lion Landscapes and Oxford University Wild CRU, and funded by the Darwin Initiative, Lion Recovery Fund, and National Geographic's 'Big Cat Initiative', BCP was able to strategically place camera traps in wildlife strongholds, and the results have been remarkable! The camera traps are even capturing animals that we did not know were in the Conservancy.

Although native to the Lower Zambezi National Park, the Moloney's Monkey had not been seen in Rufunsa until we caught them on film.



The traps have also made it possible to view nocturnal animals such as Caracals and Serval.



Placing the traps in more mountainous areas meant that species were captured, such as Kudu and Zebra in places they have not been documented.



A monumental sighting to date is the Southern Ground African Hornbill, which has been spotted twice on film, which is a key 'Trigger Species' for the LZRP's CCB Triple Gold Verification.

BIODIVERSITY IMPACTS LZRP

WATCHING WILDLIFE RETURN TO RUFUNSA



10/7/2020 5:31PM CB 78



9/29/2020 11:56 PM CB 110

We have watched as herds of Sable call the Conservancy their home again. When the project started in 2012, Sable and Roan were rarely seen. Now big herds of 20-50 are recorded on scout patrols, with young antelope among them, which, together with the transect monitoring shows us that there is an increasing trend.



9/26/2020 2:05 AM



16/2020 3:00 PM CB 115

Cuddeback
Digital

The camera traps have provided evidence of predators in the area, such as Leopards and Spotted Hyenas. This in itself is an extremely positive indication, for these large predators need plenty of prey species to survive. Thus, a healthy population of carnivores equates to a healthy population of herbivores, which in turn means that they are supported by a flourishing ecosystem.

This is the 4th consecutive year that a structured biodiversity survey was conducted in LZRP. The survey design is based on a line transect method which is statistically robust. The results from the surveys indicate that the recovery rate of wildlife in LZRP is slow, mainly as a result of the level of depletion prior to 2012, when BCP took over management. Additionally, Miombo Forest is lower densities habitat. However, the trends in wildlife abundance ratios are encouraging. While the actual wildlife numbers remain low, steady increases were recorded for Klipspringer, Kudu, Roan Antelope, Sable Antelope and Warthog, Bushbuck, Grey Duiker and Sharpe's Grysbok.



**Lion
Recovery
Fund**

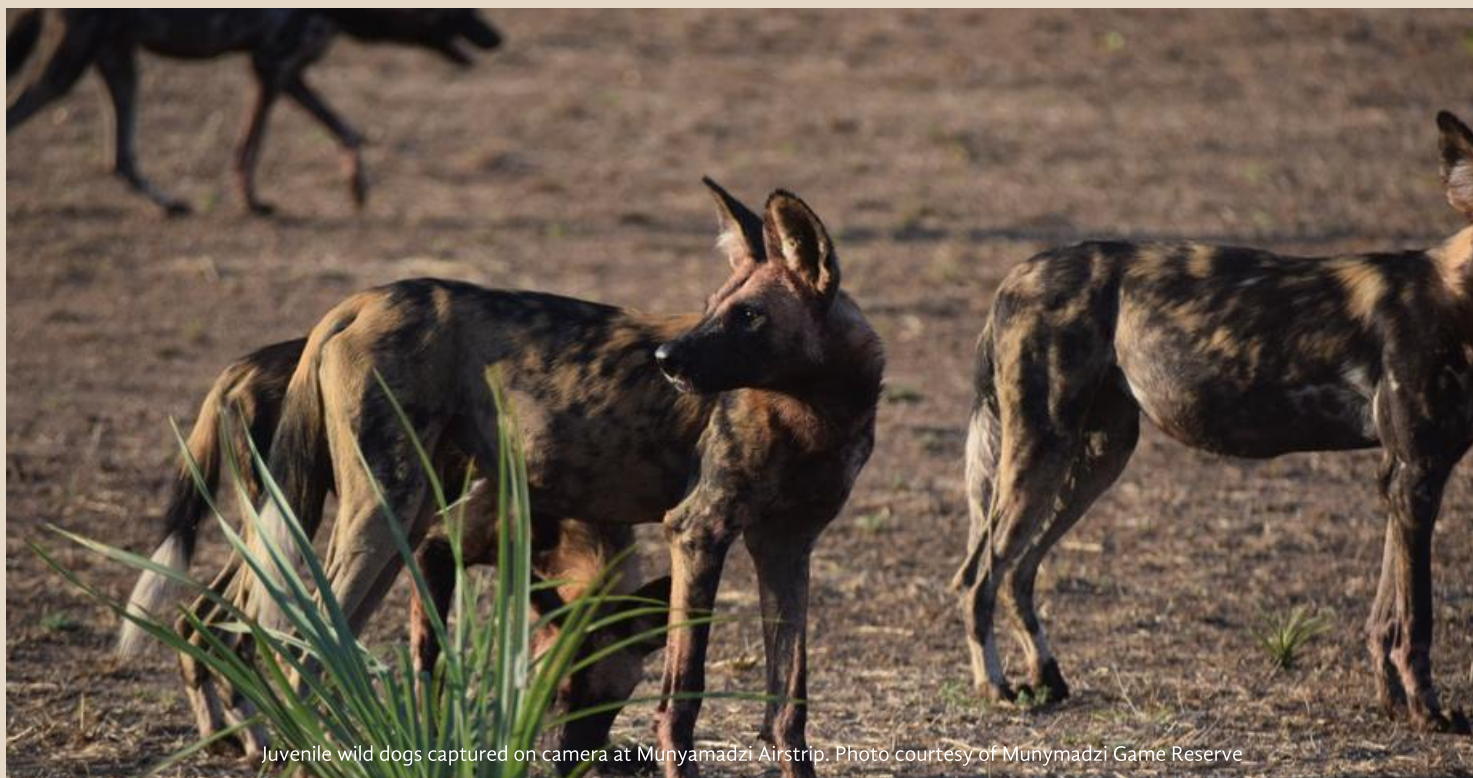


**BCPTM
TRUST**



BIODIVERSITY IMPACTS LCFP

SUPPORTING WILD DOG ECOSYSTEMS



Juvenile wild dogs captured on camera at Munyamadzi Airstrip. Photo courtesy of Munyamadzi Game Reserve

These social and inquisitive mammals, known for traveling in large packs, once roamed the continent. However, due to a combination of habitat loss and human-wildlife conflict (with wild dogs seen as a threat to livestock by farmers) they are now classified as endangered species and found only in sub-Saharan Africa. Wild dogs need wildlife corridors to survive as it helps connect their increasingly fragmented habitat.

While wild dogs are not uncommon in Munyamadzi, 2019 marked their first sighting of collared wild dogs that were making their way all the way down from Nsefu, South Luangwa National Park, towards Lower Zambezi. That's a one-way journey of close to 300kms! The majority of which is outside national parks and through a large portion of the LCFP in Game Management Areas. Since then, through community camera traps and live sightings, our partners at Munyamadzi and Lion Landscapes have recorded numerous sightings of pups and juveniles.

This is exciting for a number of reasons; Wild dogs need large unfenced and protected tracts of habitat to survive, they also rely on a healthy prey base, and a healthy prey base needs a protected and healthy ecosystem to support it. The community camera trap project is designed to incentivize communities to see the value in wildlife near their villages, and not just the damage that it brings. Through BCP's community and government partnership under LCFP, and Munyamadzi's conservation efforts, the wild dog's habitat is being protected.



MUNYAMADZI GAME RESERVE
LOWER LUANGWA VALLEY | ZAMBIA



Lion
Recovery
Fund



BCP TRUST

The BCP Trust is a separate, not-for-profit legal entity affiliated with BCP. BCP Trust's role is to support community projects linked to BCP's overall forest protection efforts.

BCP Trust works with community stakeholders to address the root causes of deforestation and to design and implement projects to make forest conservation valuable to people.

One such project is Eco-Charcoal, a pilot project 'incubated' by BCP Trust. Started in 2012, the Eco-Charcoal project was developed to directly address unsustainable charcoal production as one of the major drivers of deforestation in Zambia. Since then, the Eco-Charcoal project has continued to grow and improve, through ongoing partnerships with BCP, Forestry Department, Musika and Peace Parks Foundation.

As a not-for-profit organization that aspires to achieve community benefits linked to forest protection, BCP Trust seeks additional funding—in the form of grants and donations—for community-based projects attached to BCP's REDD+ Projects.



Charpreneur, Davy Banda

ECO-CHARCOAL

POSSIBLY THE BEST GREEN CHARCOAL IN THE WORLD!



Deforestation causes 11% of global carbon emissions, and Zambia's rate is amongst the highest in the world. One contributing factor to this is that only 28% of Zambians have access to electricity, leaving charcoal as the source of cooking and heat. On top of this, charcoal production is one of the primary income sources for many rural Zambians. BCP created Eco-Charcoal in response to this clear need to create a legal, sustainable alternative product for the market. Probably the best Eco-Charcoal in the world: Eco-Charcoal is Zambia's premium lumpwood charcoal which is sustainably produced to protect Zambian forests. It is 100% pure and natural and burns 20% longer than regular charcoal. It is produced using a modern method that reduces harmful smoke and emissions during use, which reduces the risk of harmful inhalation by its users. Eco-Charcoal currently partners with 83 trained community producers we call "Charpreneurs" in a bid to provide fair and safe employment for rural Zambians.

In 2020 Eco-Charcoal produced and sold 90 tonnes of sustainably produced charcoal, directly supporting the households of the Charpreneurs in LZRP.



SUSTAINABLE



ZAMBIAN MADE



BURNS CLEANER



SUPPORTS LOCALS



STOPS DEFORESTATION



BURNS LONGER

ECO-CHARCOAL

POSSIBLY THE BEST GREEN CHARCOAL IN THE WORLD!



"I love my job. Eco-Charcoal helps to support me, as well as my grandchildren. I am a widow and my grandchildren depend on me. With this income, we can buy food and I have managed to buy items for the house such as a kettle. For me, this is very good. I know that it is important, not just for my family, but for Zambia's future, that we learn sustainable ways to make charcoal. Here in Zambia people need charcoal for cooking, for light, and keeping us warm after dark. Eco-Charcoal is sustainable in that we only cut trees that are bigger than 30cms in circumference, and we cut the trees at such an angle that it allows the runoff from the rainwater to allow regrowth. So after 18 years, the trees will have grown back. We mark the forests so that we know which areas not to cut from as we wait for the trees to regrow"

Indiwina Kalunga, Eco-Charcoal Charpreneur, Kantyantya village.

CHARGING FOR CONSERVATION

FUCHS 2020 ELEPHANT CHARGE: TEAM #24 ECO-CHARCOAL

Third Time's a Charm for Team #24 Eco-Charcoal in Monumental Triumph for Conservation Education in this Year's Elephant Charge

In 2018, Team Eco-Charcoal raised a modest \$1,300; determined to beat this, 2019 saw the team raise \$6,000. In 2020, however, in the midst of Covid-19, and the devastating impact it has had on conservation, the team knew that it was vital to raise as much money as possible for the conservation sector in Zambia.

The Charge is held to raise money for conservation in Zambia. Its focus over the last 13 years is conservation through education, with the money raised from the Charge going to 11 conservation organizations across Zambia. Proving that third time's a charm, Team Eco-Charcoal raised \$40,000. That is the second-highest amount ever raised in dollars, and the highest kwacha amount raised in the Charge's 13-year history. The team went from never winning an award at the Charge, to coming home in 2020 with not one, but two awards, winning The Shortest Net Distance Award and The Highest Sponsorship Raised.

"Once we started fundraising I was blown away by people's capacity to give, with our board graciously offering to match any amount raised up until \$20,000! I cannot thank our supporters enough for their generosity in helping to fund community efforts in Zambia"

Dr. Hassan Sachedina – Team Eco-Charcoal driver and BCP CEO.



Team Eco-Charcoal 2020

COVID-19

OUR RESPONSE TO THE GLOBAL PANDEMIC

As Covid-19 hit Zambia, we stepped up to offer support to our partners

In April 2020, we donated 3.5 tons of soap to cater to each household in each Chiefdom in The LCFP to help support household sanitation efforts. A total of 36,000 households benefited. In July, we donated 100 washbasins and 3,000 re-usable masks to Mambwe District Education Board for use in various schools around South Luangwa National Park.



Soap distribution in LCFP

COVID-19

OUR RESPONSE TO THE GLOBAL PANDEMIC

In an effort to aid small businesses that faced unprecedented adversity, BCP's Board rallied an emergency fund to provide financial grants to tourism businesses and conservation NGOs in Eastern and Lusaka Provinces. The facility named the "REDD+ Emergency Business Support Fund" disbursed 1 million Kwacha (US\$56,000) as grants to 14 small tourism businesses and NGOs. This fund helped the organizations to pay community employees subsistence packages. The grant impacted 6,876 beneficiaries directly and over 61,600 beneficiaries indirectly. BCP also became a member of BCCET (Business Council Covid19 Emergency Taskforce) in Zambia. This council was created to bring together leaders from the private business sector to coordinate efforts to mitigate the financial, economic, and social effects of Covid-19.

As the world enters an economic recession not seen since the Great Depression of 1929, we are seeing dramatic decreases in tourism and funding available to conserve African biodiversity strongholds. Never more than now is it important to try to support the organizations who are doing great complementary work in the same ecosystems where BCP operates.

Our hope is that when we emerge from Covid-19, that the "ecosystem" of businesses and NGOs supporting the same Chiefdoms as BCP will still be strong.



Village Headmen and women meeting in Sandwe Village

REACHING INTERNATIONAL HEIGHTS WE GUARANTEE EXCELLENCY AND INTEGRITY



B Corporation: Balancing Sustainable Business and Purpose

- BCP is a BCorp 'Best for the World Honoree'
- BCP is in the top 0.5 % of global B corps
- 2nd highest scoring B Corp in Africa
- 17th highest score in the world of over 3,900 total B Corps
- One of only 27 B Corps globally with a rating of 150+



Both of BCP's REDD+ Projects have achieved CCB Triple Gold for exceptional community impact



Both of BCP's REDD+ Projects have been verified against the Verified Carbon Standard



Voluntary Carbon Market Rankings 2020

In 2020, nine years in the making, BCP was awarded Runner Up for BEST PROJECT DEVELOPER - FORESTRY AND LAND-USE. We were proud to be the only African firm nominated in our award category.

We look forward to counting on your vote in 2021!



Our goal is to align with the IFC Performance Standards and to support all 17 of the UN's Sustainable Development Goals by 2030 (BCP currently supports 16 out of the 17 SDG's).

IFC Performance Standards:



SDG's:



ACKNOWLEDGMENTS

Our accomplishments would not have been possible without the support of our valued #PARTNERSINCONSERVATION:



LCFP CFMG'S:



LZRP COOPERATIVES IN BUNDA BUNDA CHIEFDOM:

- Chitungulu Chiefdom
- Mpanshya Chiefdom
- Shikabeta Chiefdom
- Nyalugwe Chiefdom
- Luembe Chiefdom
- Sandwe Chiefdom
- Mwanya Chiefdom
- Nsefu Chiefdom
- Jumbe Chiefdom
- Mnkhanya Chiefdom
- Malama Chiefdom
- Msoro Chiefdom

- Chilimba Cooperative
- Chakanda Cooperative
- Liyeyelo Cooperative
- Mweshang'ombe Cooperative



**Lion
Recovery
Fund**



Mills Foundation



MUNYAMADZI GAME RESERVE
LOWER LUANGWA VALLEY | ZAMBIA

EDWARD SELFIE PHOTOGRAPHY
PATRICK BENTLEY PHOTOGRAPHY

BAINES CAMP PHOTOGRAPHY
GINA WOOLLEY PHOTOGRAPHY



BCP™



@BioCarbonPartners



@biocarbon_partners



@biocarbon_partners



biocarbonpartners.com

BCP Office:
Leopards Hill Business Park,
Lusaka, Zambia
Tel: +260 211 290 051
Registration Number: 99394
info@biocarbonpartners.com