



BCP™



2023

IMPACT REPORT

BIOCARBON PARTNERS



Natural
Climate
Solutions
Alliance



TABLE OF CONTENT

12 YEARS OF BCP	1
TAKE A LOOK AT 2023 WITH SENIOR CHIEF LUEMBE	2
MEET OUR REDD+ AMBASSADOR, VERONICA	3
IMPACTS OF CLIMATE CHANGE ON OUR HEALTH	4
THE CARBON CREDITS ECOSYSTEM	5
WHAT DO WE MEAN BY NATURE BASED SOLUTIONS?	6
PROJECT UPDATES	
LOWER ZAMBEZI REDD+ PROJECT	7
LUANGWA COMMUNITY FORESTS PROJECT	9
KAFUE-ZAMBEZI COMMUNITY FORESTS PROJECT	12
BCP GOES INTERNATIONAL	14
WELCOME TO BCP MOZAMBIQUE THE GREATER LIMPOPO REDD+ PROJECT	17
THE PROPOSED CUANDO CUBANGO COMMUNITY FORESTS PROJECT	18
COMMUNITY AND LIVELIHOOD IMPACTS IN ZAMBIA TO DATE	20
COMMUNITY DEVELOPMENT	21
INSPIRING THE NEXT GENERATION - EDUCATION	22
SUPPORTING CHANGE IN CHITUNGULU	23
STRENGTHENING LOCAL INSTITUTIONS ONE VILLAGE AT A TIME!	24
CLIMATE-SMART AGRICULTURE	25
CREATING MARKET LINKAGES	27
CLIMATE FINANCE SCALES FOOD SECURITY IN TIMES OF DROUGHT	28
THE ROLE OF BIODIVERSITY	29
BY PROTECTING NATURE WE PROTECT OURSELVES	30
CONSERVATION WINS IN 2023!	32
REHABILITATION OF CHINZETE WILDLIFE CAMP	34
PASSING OUT PARADE	35
WE ARE BCP	36
ZIKOMO KWAMBIRI!	37
UN SUSTAINABLE DEVELOPMENT GOALS	38
HIGH INTEGRITY OFFSETS THAT YOU CAN TRUST	46
OUR PARTNERS	47

12 YEARS OF BCP

SHAPING LIVES AND ECOSYSTEMS THROUGH REDD+

2012 The birth of BCP, and Zambia's first REDD+ Project, The Lower Zambezi REDD+ Project (LZRP) is established.

2013 LZRP becomes Africa's first Triple Gold CCB validated project; the World's 3rd.
BCP wins the USAID/CFP of \$14 Million for 5 years.

2014 LZRP achieves Verified Carbon Standard (VCS) verification.

2015 The Forests Act of 2015 enables Community Forest Management Groups (CFMGs) to control forest rights and have the ability to transfer carbon rights to third parties.

2017 BCP is the third highest scoring Certified B Corporation in the World.

2018 BCP signs 30-year agreements with 12 Chiefdoms under The Luangwa Community Forests Project (LCFP) covering 944,000 hectares.

2019 LCFP CFMGs first communities in Zambia to be granted carbon rights from GRZ and LCFP achieves VCS verification and CCB Triple Gold validation. LCFP becomes largest REDD+ Project in Africa by hectares.

2020 BCP Runner Up in the 2020 EF Rankings as world's "Best Project Developer - forestry and land use" and first cumulative payment from forest carbon fees made to LCFP Chiefdoms.

2021 LCFP over 1 million Ha and wins Best Individual Offsetting Project+BCP wins Best Impact Report by EF Voluntary Carbon Market Rankings. REDD+ brings in US\$8 million + directly paid to communities since the pandemic began.

2021 A feasibility study for BCP's 3rd Project, KZCFP starts - Phase 1 is up to 2.5 million ha, with the potential to grow into an 8 million ha project by 2030

2021 BCP kicked things off for GLTFCA Limpopo feasibility study.

2022 LCFP expansion plans are underway,

2022 LZRP passes its 9th consecutive VCS verification, and LCFP it's 4th.

2022 BCP awarded Best Impact Report by EF Awards, and both LCFP and LZRP are announced WEF NCS Lighthouse Alliances.

2022 Roughly \$12 Million in carbon revenue and livelihood schemes issued to communities to date.

2023 BCP awarded Best Project Developer - Biodiversity, and Best Impact Report, while LCFP announced Best Individual Offsetting project by EF Awards.

Credits issuance -2.3m tons.

2023 Roughly \$13 Million in carbon revenue and livelihood schemes issued to communities to date.

2023 Total hectareage under REDD+ exceeds 1.2million ha.

TAKE A LOOK AT 2023 FROM ONE OF OUR PATRONS

SENIOR CHIEF LUEMBE

I believe I can confidently speak on behalf of my community and the LCFP, because this is where I live and where I am able to personally witness positive benefits every day.

As residents, patrons and partners of the LCFP, we are extremely proud of our project. It is currently the largest REDD+ project in Africa by hectares, and we believe it to be the largest in the world by quantified social impact. It comprises over 1 million hectares, and when you think of the connectivity such a vast space covers in such an important part of the country it is made even more remarkable.



Protecting the world's forests is crucial for addressing the global climate crisis, but preventing deforestation is an especially difficult challenge in Africa, where forests are also a critical source of income for local communities, and for biodiversity which rely on forests for their existence. While Zambia remains one of the most forested countries on the African continent, it is losing forests at an estimated rate of 163,000 hectares annually, equal to 402,610 soccer fields lost per year.

The implementation of the LCFP shows that there are solutions that are yielding significant positive results, not only for the environment and biodiversity but also for our communities. The benefit-sharing mechanism includes cash distribution, forest protection, livelihood activities, capacity building, and employment creation. The LCFP has directly benefited more than 230,000 people, resulting in a 220% increase in household average income between 2016, prior to the project's implementation, and now. We continue to experience tangible positive impacts in various areas, including improved access to education, infrastructure development, access to clean drinking water, and support for local economic activities.

One of the most fundamental reasons for the success of the LCFP is that revenue generated from the sale of carbon credits is owned, implemented, and managed by the communities who receive it – our communities themselves determine what the income will be spent on within our communities. The activities that we implement in our communities are arrived at through a lengthy consultative process directly involving the communities, who themselves identify and choose projects, guided by their many urgent needs.

The LCFP follows a rigorous methodology, considering various factors such as baseline deforestation rates, project activities, and emissions reduction contributions. We work closely with recognized standards and certifications, such as Verra, to ensure credibility and transparency in the calculation and issuance of carbon credits. Our commitment to upholding these standards is unwavering.

At its heart, the LCFP is driven by a strong commitment to conservation, community development, and reducing the threat of deforestation not only in Luembe Chiefdom but across the entire project area covering 17 Chiefdoms. To date, the project has protected over 600 million trees and ensured that sustainable conservation and preservation have been imprinted into the hearts and minds of our communities. This has been done by developing initiatives that offer communities alternatives and viable income revenues that do not involve damage to trees and biodiversity.

As Zambians, we are taking our own actions to save our forests and our futures, with the introduction of carbon offset, deforestation, and REDD+ projects. We recognize that the REDD+ model, and indeed the entire carbon credit ecosystem, is a constantly evolving and improving space. While it is critical to continue to improve on the model, it is crucial not to damage the profound impact that this model has on Zambia and our communities. With the right support, collaboration, and investment, carbon offsets can, and are playing a vital role in empowering our communities, as well as contributing to the global fight against the climate crisis.

Yours Sincerely,
Senior Chief Luembe.

MEET OUR REDD+ AMBASSADOR

LEAD FARMER, VERONICA BANDA

#CarbonCreditsWork to solve climate change and provide food security and a sustainable future for some of Zambia's most nutrition insecure families.



"I have lived here for the past 23 years, and we based our farming on the knowledge of our parents, passed down to us. The way that they would plough was done by gathering shrubs and burning them. When the rain came after burning we would plant our seeds. But we found that the yield was just not good enough, with very little grain produced; only managing to harvest about five buckets of grain from one hectare.

We have always been faced with hunger as a result, even after my parents passed away.

But since I joined the BCP Lead Farmer program and we learned how to apply the methods of climate-smart agriculture to our farming, I am able to harvest 30 sacks of grain from just one hectare. Which means there is no hunger in my household. When times were tough, in my parent's time we would be starving, we would not know when next we could eat, the children were not able to go to school - But now they are able. We can have breakfast, lunch and supper and even afford luxuries like soft drinks.

As a BCP (BioCarbon Partners) Lead Farmer I have 25 Follower farmers, who I have taught the modern and conservation way of farming. At first they even thought my yields might be from witchcraft from how abnormal my high yields seemed in comparison to the traditional methods we used, but I asked them to follow me and how I farmed, and now they no longer suffer from hunger either." ~ Veronica Banda.

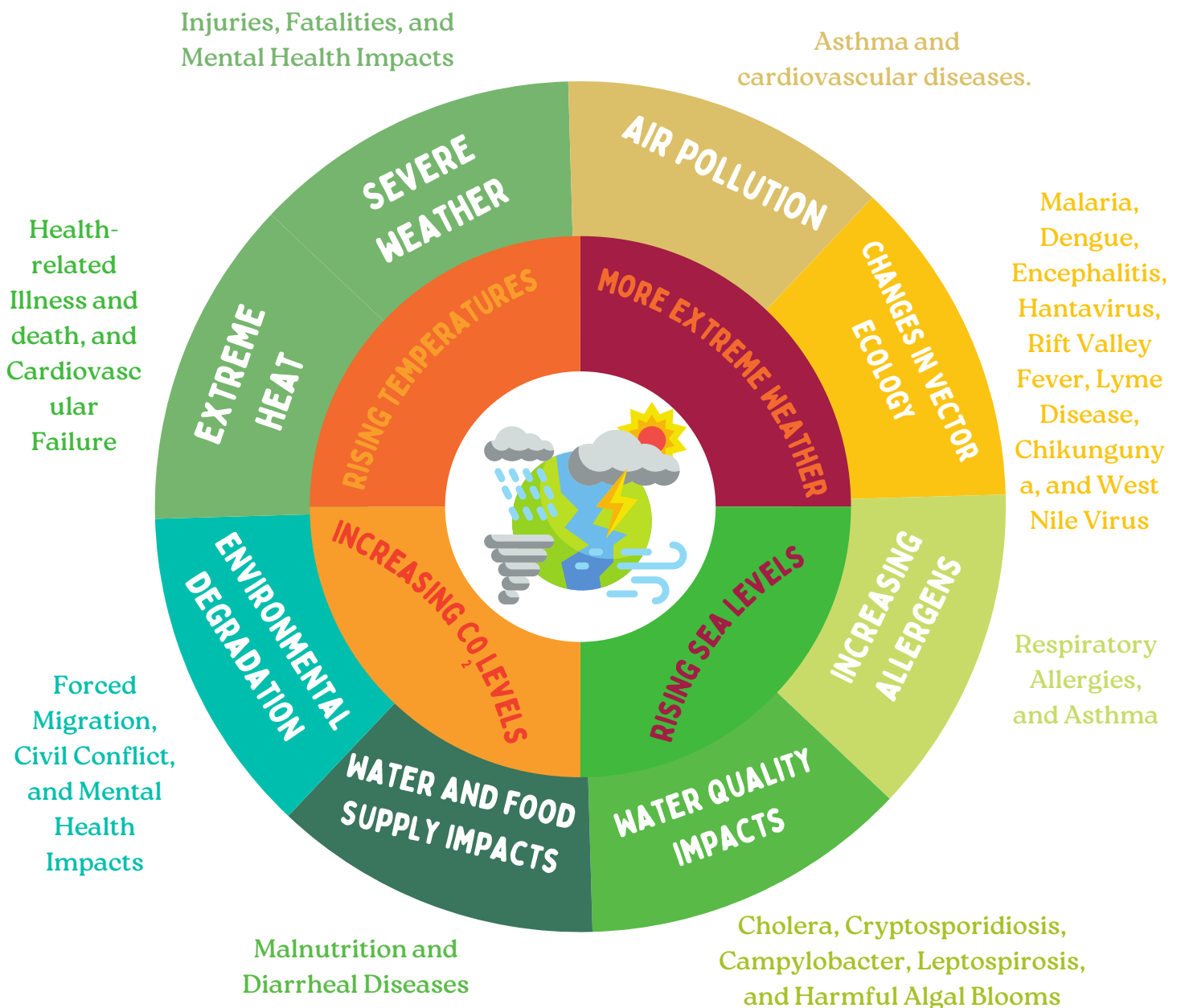
IMPACTS OF CLIMATE CHANGE ON OUR HEALTH

The Intergovernmental Panel on Climate Change's (IPCC) Sixth Assessment Report (AR6) concluded that climate risks are appearing faster and will become more severe sooner than previously expected, making adaptation increasingly difficult as global heating intensifies.

It further reveals that 3.6 billion people globally already live in areas highly susceptible to climate change. Despite contributing minimally to global emissions, low-income countries and small island developing states (SIDS) endure the harshest health impacts. In vulnerable regions, the death rate from extreme weather events in the last decade was 15 times higher than in less vulnerable areas.

Climate change is impacting health in various ways, including increasing death and illness from more frequent extreme weather events such as heatwaves, storms, and floods. It also disrupts food systems, leads to increases in zoonoses and food, water, and vector-borne diseases, and exacerbates mental health issues. Furthermore, climate change undermines many social determinants of good health, such as livelihoods, equality, and access to health care and social support structures.

These climate-sensitive health risks are disproportionately felt by the most vulnerable and disadvantaged, including women, children, ethnic minorities, poor communities, migrants or displaced persons, older populations, and those with underlying health conditions.



THE CARBON CREDITS ECOSYSTEM

A SIMPLE YET EFFECTIVE APPROACH TO CLIMATE CHANGE

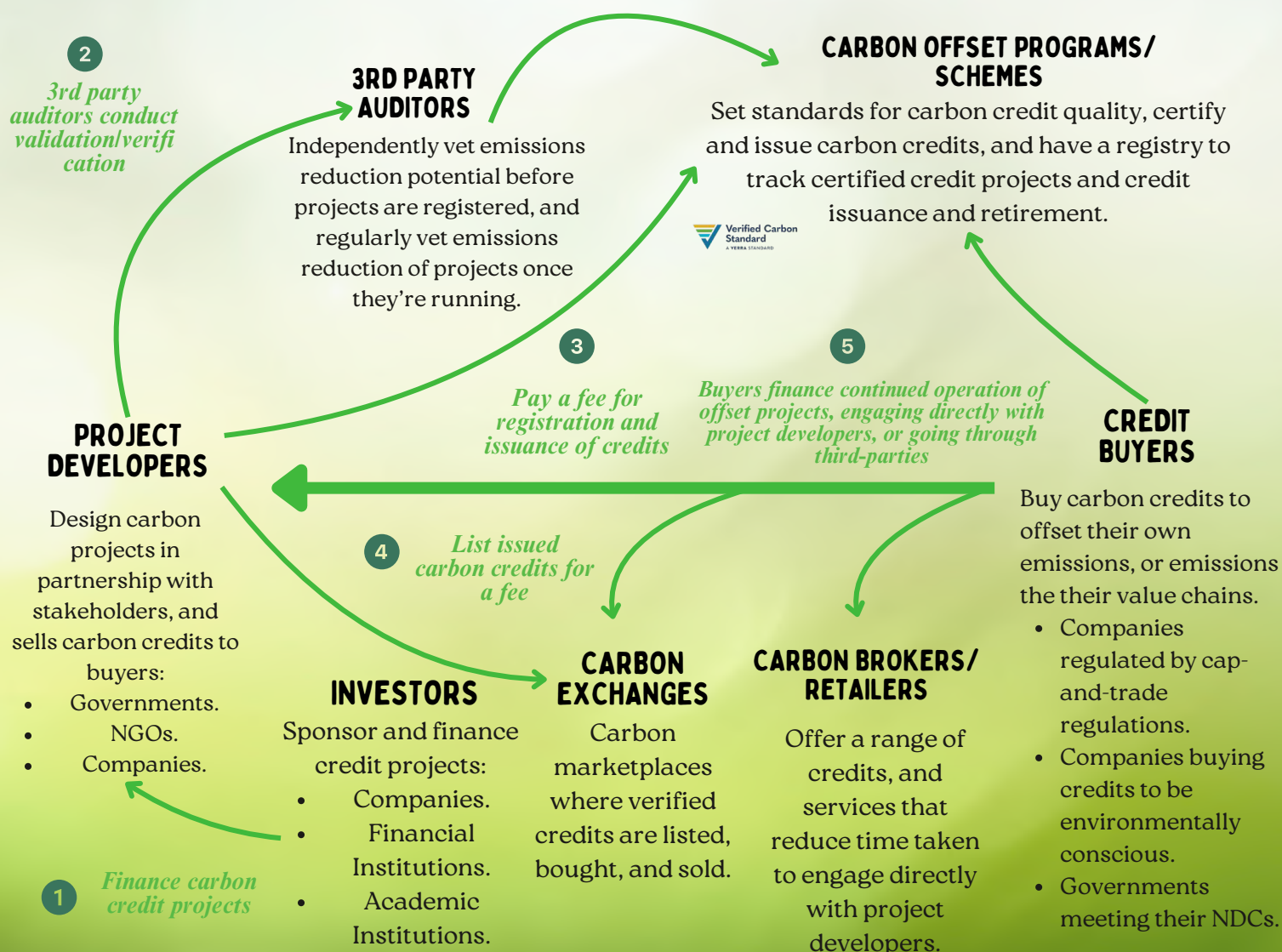
REDD+ is a mechanism that creates financial value for the carbon stored in forests by offering incentives for developing countries. To combat deforestation around 60 countries are implementing REDD+ projects under the UNFCCC, Zambia is one of them. Every carbon offset represents 1 tonne of reduced CO₂ or its greenhouse gas (GHG) equivalent, that compensates for emissions made elsewhere.

By purchasing carbon offsets, anyone can finance a certified climate action project, and bring about a real reduction in emissions elsewhere in the world. After all, GHGs are released into the global atmosphere, so no matter where the reduction happens, the same positive benefit is achieved.

Carbon offsets are an exciting way to channel capital to much-needed causes, while we look for the solutions and technology we need for hard-to-reduce emissions.

Reducing
Emissions (from)
Deforestation (and)
Degradation

the role of conservation, sustainable management of forests and enhancement of forest carbon stocks



WHAT DO WE MEAN BY NATURE BASED SOLUTIONS?

There's so much talk surrounding the importance of Nature-Based Solutions... But when we talk about Nature-Based Solutions or NBS, what exactly do we mean?



Nature-based solutions are “actions to protect, sustainably manage, and restore natural or modified ecosystems, which address societal challenges effectively and adaptively, simultaneously providing human well-being, ecosystem resilience, and biodiversity benefits”, according to the definition adopted by the United Nations Environment Assembly in March 2022.

“They are designed to address major societal challenges, such as biodiversity loss, climate change, land degradation, food security, disaster risks, urban development, water security, as well as social and economic development,” it adds.

What we generally call natural climate solutions (NCS) are specific interventions designed to lower greenhouse gas emissions and increase carbon storage in forests, grasslands, and wetlands, through conservation measures, such as halting deforestation, and the adoption of sustainable land use and restoration practices.

Carbon credits generated through natural climate solutions offer businesses the opportunity to compensate for their emissions while contributing to the halt and potential reversal of nature loss.

NCS can be used to reduce value chain emissions from the forestry and agricultural sectors. Companies also use natural climate solutions to compensate for their residual carbon footprint after taking all measures to reduce their annual emissions.

LOWER ZAMBEZI REDD+ PROJECT

RUFUNSA CONSERVANCY

As the first REDD+ project in Zambia, the Lower Zambezi REDD+ Project pioneered the development of forest conservation projects in the country. The project is currently the first project in Africa to have achieved 9 consecutive and successful verifications against the Verified Carbon Standard (VCS) and was the first project in Africa (second in the World) to achieve CCB Triple Gold Verification against the Climate, Community, and Biodiversity Alliance Standards.

The project covers a 40,126-hectare buffer to the Lower Zambezi National Park. Sable, roan antelope and zebra are among many special species found in the LZRP Project area.

In 2022 and 2023, camera trap footage captured the return of lions to the Conservancy after a long period of absence. Additionally, we have documented wild dog using the area as a wildlife corridor to make safe passage through.

These significant biodiversity results demonstrate just how well the project model is working.

LZRP sits on a piece of private land known as Rufunsa Conservancy, protecting over 60 kilometers of the boundary of the Park itself.

1,199

Households
Benefiting from
Forest Carbon
Fees

5,875

Beneficiaries

3,067

Of whom are
Women

40,126

Total hectares
of forest
protected

20,624,764

Estimated trees
protected

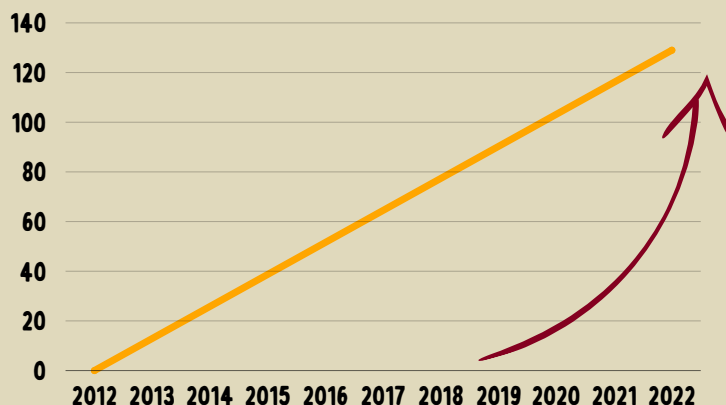
2,359,230

Tons of carbon
dioxide emissions
reduced since
inception

\$400,000

Carbon Fees and
Livelihood Funds
for Community
Projects Disbursed
since Inception

**129% AVERAGE HOUSEHOLD INCOME
INCREASE BETWEEN 2012 - 2022**



LZRP IMPACTS

31

Livelihood
Projects since
Inception

36

Community
Projects since
Inception

40

Lead Farmers

42.5%

Of Whom are
Women

5

Community
Scouts

1

Of Whom is a
Woman

The Project is implemented in cooperation with local community members in Bunda Bunda Chiefdom and The Soli Shamifwi Royal Establishment. The project develops sustainable land-use practices that conserve threatened forests and wildlife, while also investing in development for rural communities.

In 2023 the LZRP was selected among another 32 projects to pilot Verra's nature crediting framework (SD VSta Nature Framework), with the overall aim to be able to start issuing biodiversity credits in upcoming years.



LUANGWA COMMUNITY FORESTS PROJECT

VOTED THE BEST INDIVIDUAL OFFSETTING PROJECT IN THE WORLD

Voted the Best Individual Offsetting Project in 2021, and again in 2023 by the Environmental Finance Voluntary Carbon Market Rankings; the Luangwa Community Forests Project (LCFP) is the largest REDD+ Project in Africa, and arguably, the largest in the World in terms of quantified social impacts. Having welcomed 5 new Chiefdoms to the Project in 2022, LCFP now protects over 1.2 million hectares of dryland forests across 17 Chiefdoms.



LCFP IMPACTS

49,379

Households
Benefiting from
Forest Carbon
Fees

232,530

Beneficiaries

119,589

Of Whom are
Women

\$12 MILLION

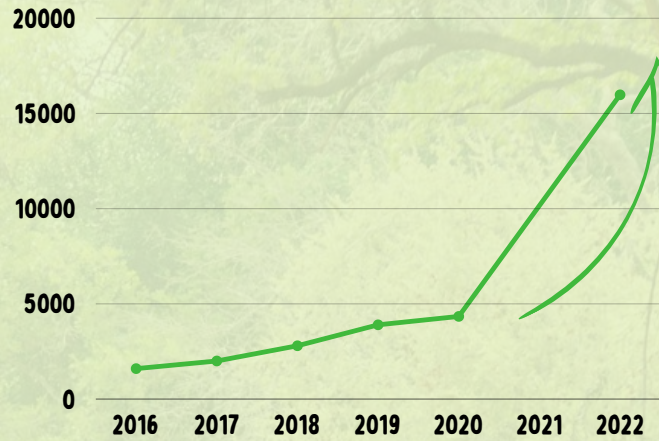
+

Carbon Fees
Disbursed since
Inception

11,303,548

Tons of Carbon
Dioxide Emissions
Reduced since
Inception

**220% AVERAGE KWACHA INCREASE
IN HOUSEHOLD INCOME
BETWEEN 2016 - 2022**



March Associates, September 2022

619,699,048

Estimated
Trees Protected

1,236,258

Total Hectares
of Forest
Protected

304

Livelihood
Projects since
Inception

346

Community
Projects since
Inception

800

Lead Farmers

38%

Of Whom are
Woman

60

Community
Scouts

33%

Of Whom are
Women

2000+

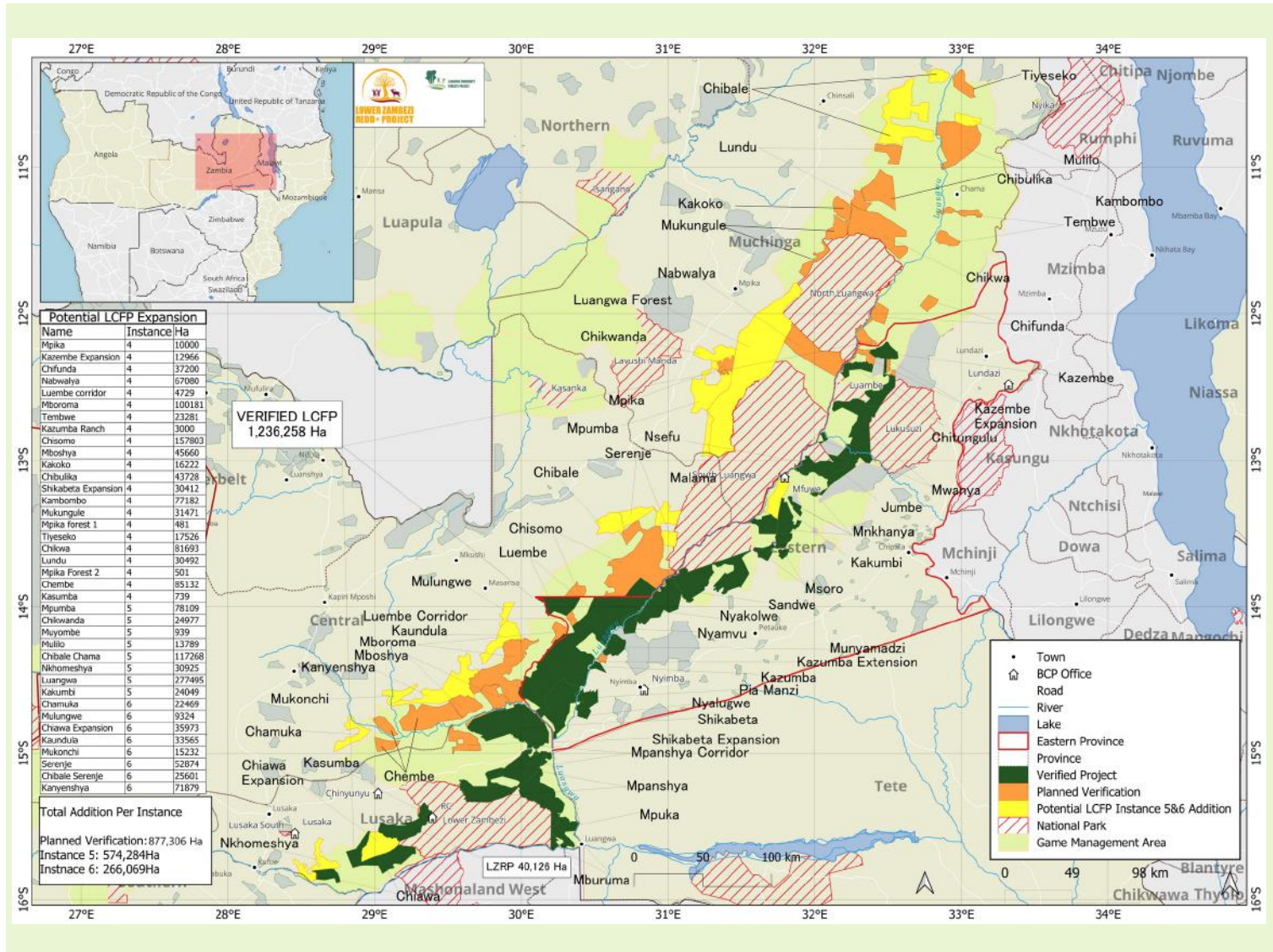
Indirect Revenue
Creation
Opportunities

\$2,339,340

Disbursed towards
Livelihood
Activities since
Inception

LCFP CORRIDOR EXPANSION

Our REDD+ model has proven itself as successful, sustainable and scalable. In our continued bid to protect Zambia's wild spaces, fight climate change, and bring life-changing benefits to communities who are at the forefront of the fight on climate change, we have ambitious plans to scale in 2023-2025.



32

Chiefdoms/CFMGS

2,694,096

Total Hectares

12

DISTRICTS:

Lumezi, Nyimba, Kafue, Luangwa, Rufunsa, Chama, Serenje, Luano, Mpika, Chongwe, Mafinga, Mambwe, Lavushi, Chisamba.

37,000,000

Tons of CO2 Emissions Expected to be Reduced over 10 Years

1,657,460

Additional Hectares

82

Direct Jobs Created (12 Community Scouts)

500+

Additional Households estimated to Benefit

4 PROVINCES:

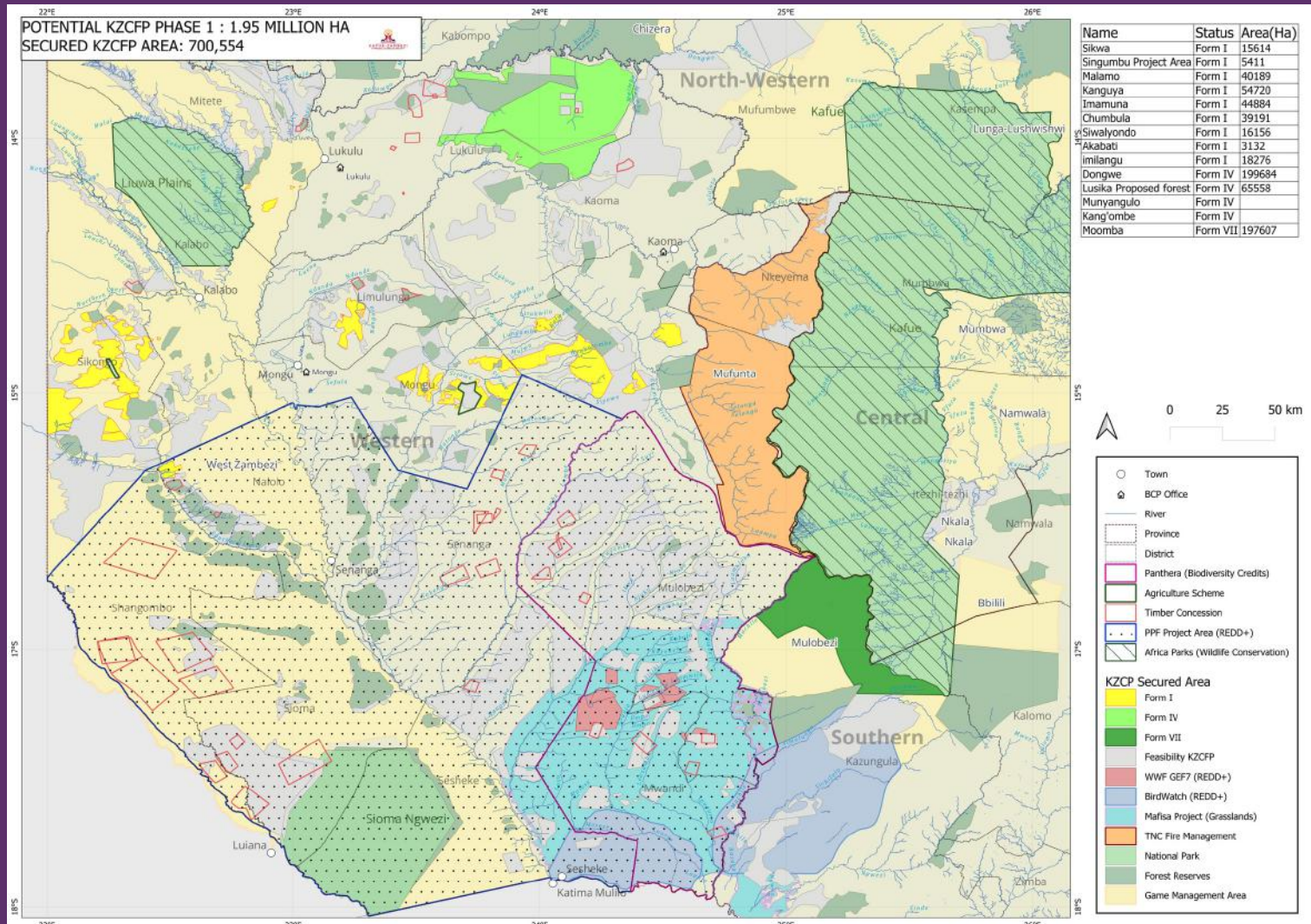
Central, Muchinga, Eastern and Lusaka.

KAFUE-ZAMBEZI COMMUNITY FORESTS PROJECT

BCP has begun the development phase of our eagerly anticipated KZCFP (Kafue-Zambezi Community Forests Project) to unlock benefits to approximately 280,000 people across 1.9 million hectares in Zambia. KZCFP targets the conservation of a significant part of the Kavango-Zambezi (KAZA) wildlife corridor, anchored by the Kafue National Park (KNP) – Zambia's oldest and largest National Park at 22,400 km².

WHAT DOES KZCFP LOOK LIKE?

Phase 1 proposes 1,959,717 hectares of threatened forest will be protected under KZCFP. We expect the project to be verified by 2025 if all goes to plan. By 2028, the project aims to conserve 3,208,791 hectares.



KAFUE-ZAMBEZI COMMUNITY FORESTS PROJECT

THE FORMATION OF THE FIRST COMMUNITY FOREST MANAGEMENT GROUP IN WESTERN PROVINCE

REDD+ projects only work when they are owned by the community. In 2023, KZCFP took a giant step forward in establishing itself as a community owned project in Zambia when its very first Community Forest Management Group (CFMG) was formed under the KZCFP.

In 2023 three CFMGs formed in total, with many more to come in 2024 (given the size of the Project area in the first instance alone).

This is a pivotal milestone in the implementation of the project.

CFMGs are fundamental to the verification and success of REDD+ projects because these are the very (community-elected) committees that manage the revenue allocated from the sale of carbon credits for their respective Chiefdoms.

A great responsibility falls on these committees to follow the correct structure and governance in the delivery of infrastructure projects, social impact schemes, and livelihood initiatives. But, as the custodians of these community forests, it is only they who can take on this role.

BCP strictly adheres to the United Nations' Free, Prior, and Informed Consent (FPIC) principle – a specific right granted to Indigenous Peoples recognized in the UN Declaration on the Rights of Indigenous Peoples (UNDRIP), which aligns with their universal right to self-determination. And the formation of CFMGs is a vital component of upholding the rights of our indigenous partners.

BCP, together with Peace Parks Foundation, The Zambian Forestry Department, the Department of National Parks and Wildlife, and of course – the Barotse Royal Establishment – cannot wait to see what lies ahead in our shared mission of making the conservation of wildlife habitat valuable to people.

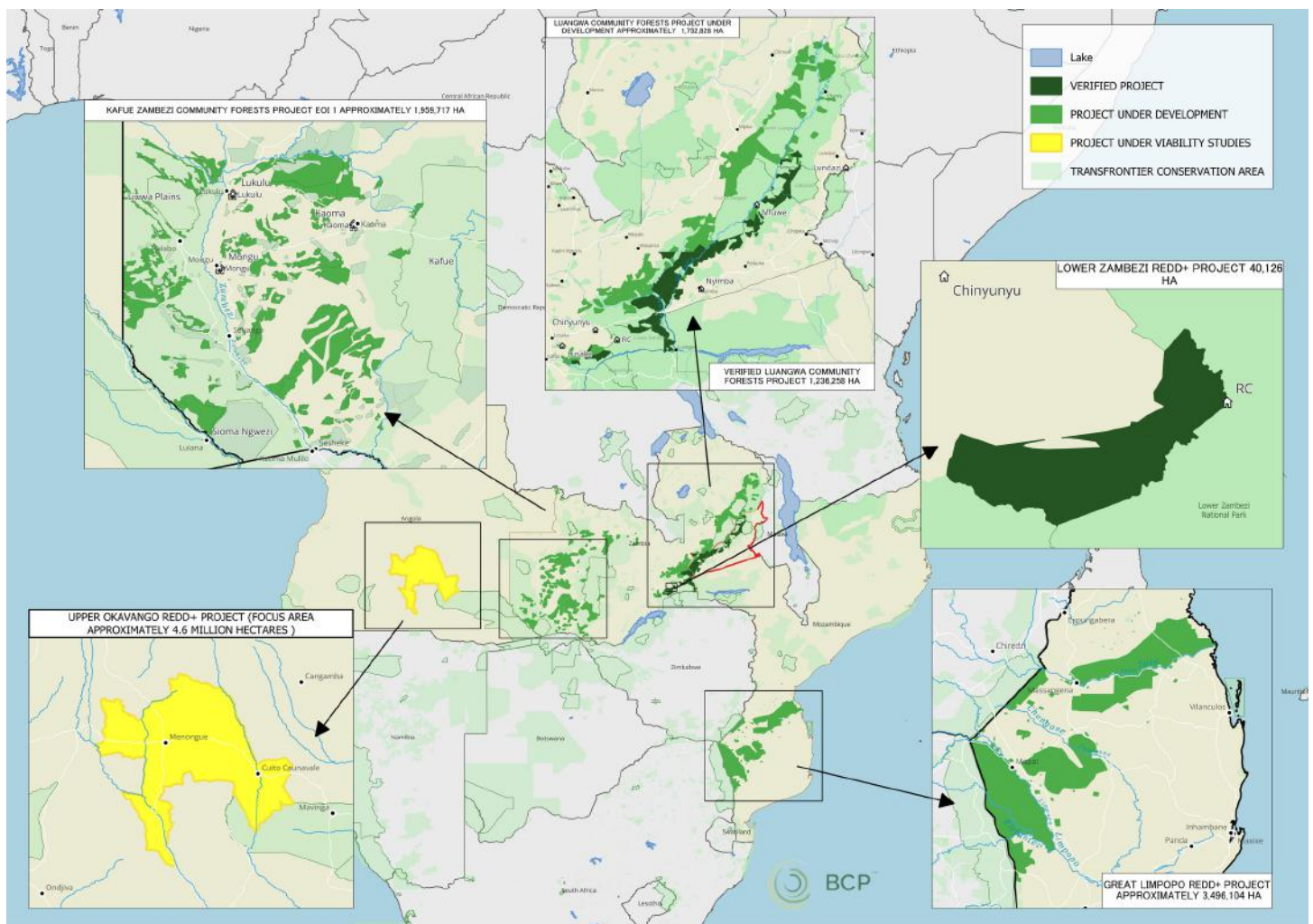


BCP GOES INTERNATIONAL

EXPORTING ZAMBIAN TALENT, SKILLS AND EXPERTISE THROUGHOUT AFRICA

BCP has plans to scale and expand operations to other provinces in Zambia and to Mozambique and Angola. These include two ground-breaking pipeline initiatives to create trans-border wildlife corridors. Achieving conservation areas that go beyond boundaries is something that can only be achieved through initiatives like REDD+.

Wildlife do not follow national borders, which is why it is vital for our projects to support some as much of the vast tracts of land under the Transfrontier Conservation Area (KAZA TFCA) as we can.



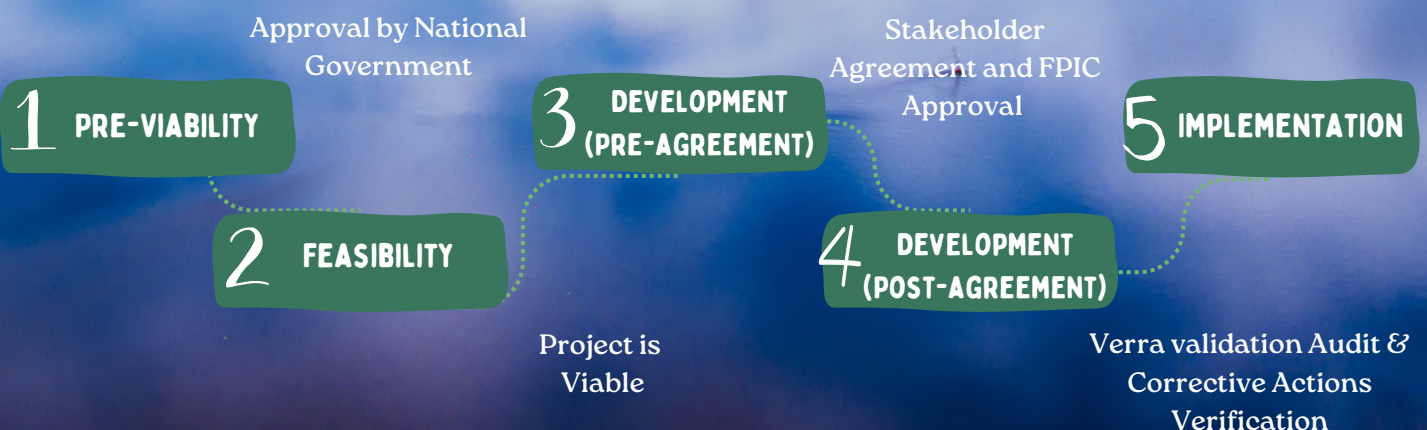
The KAZA TFCA is a vast conservation area in southern Africa that spans five countries: Angola, Botswana, Namibia, Zambia, and Zimbabwe. It is one of the largest transfrontier conservation areas in the world, covering an area of over 520,000 square kilometers. KAZA TFCA aims to promote the conservation of biodiversity, protect natural ecosystems, and promote sustainable development in the region. The area is home to a diverse range of wildlife, including elephants, lions, rhinos, and numerous bird species. It also includes important ecosystems such as the Okavango Delta, Zambezi River, Kafue National Park, Sioma Ngwezi National, Bwatata National Park, Chobe National Park, and West Zambezi- Game Management Area.

The goal of the KAZA TFCA is “To sustainably manage the Kavango Zambezi ecosystem, its heritage and cultural resources based on best conservation and tourism models for the socio-economic wellbeing of the communities and other stakeholders in and around the eco-region through harmonization of policies, strategies and practices.”

The KAZA TFCA process evolved from two initiatives namely, the Okavango Upper Zambezi International Tourism Initiative (OUZIT) and the “Four Corners” Transboundary Natural Resource Management initiative. However, unlike its predecessors, the KAZA TFCA initiative is owned and led by the governments of the five partner countries, with a clear focus on conservation as the primary form of land use and tourism being a by-product thereof. The cornerstone of the KAZA TFCA was laid on 7th December 2006 when the Ministers responsible for environment, natural resources, wildlife and tourism in the Republics of Angola, Botswana, Namibia, Zambia and Zimbabwe signed a Memorandum of Understanding (MoU) to negotiate and work towards the establishment of the TFCA. This process is well underway and the MoU will be repealed when the Treaty to formally establish the KAZA TFCA is signed by these partner countries.

The recognition of the KAZA TFCA as a Southern African Development Community (SADC) project in July 2006 means it is a programme encapsulating the SADC vision of regional integration and the SADC objectives for promoting the wise use of natural resources and effective protection of the natural environment.

THE STEP-BY-STEP PROCESS ON HOW WE SET UP OUR PROJECTS

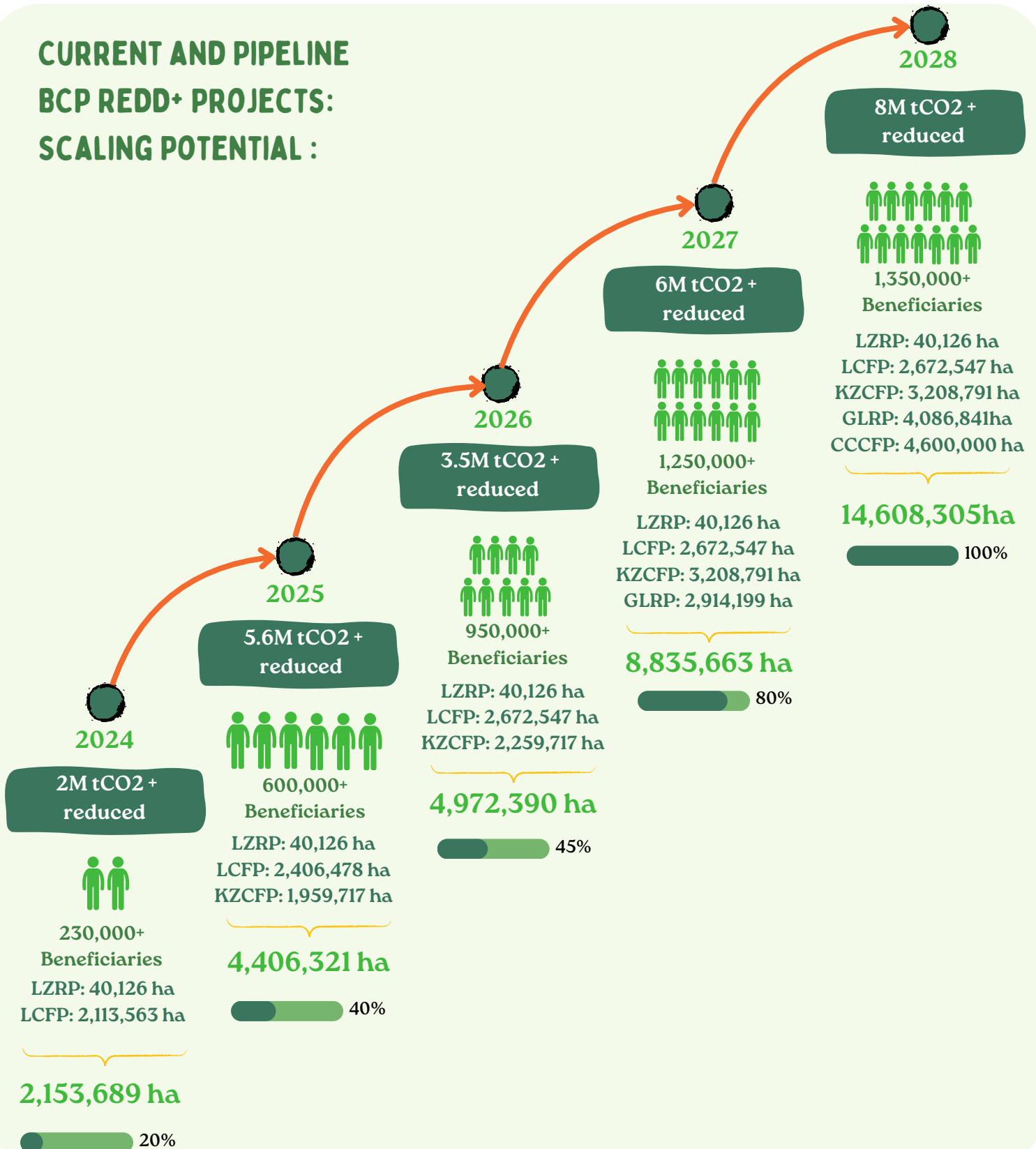


SCALING IS KEY

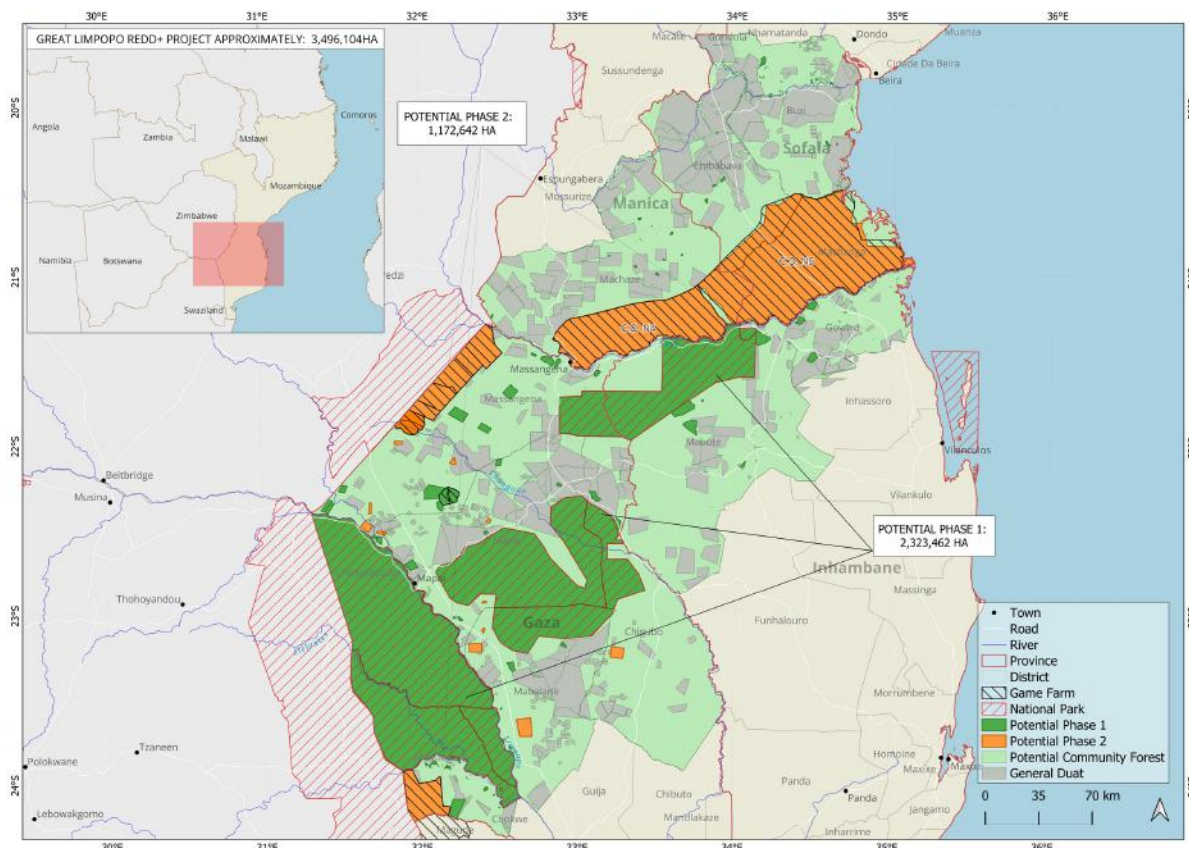
Carbon Finance solutions are not only cost-effective – they are low-risk and offer huge returns. They deliver positive impacts for people and nature – while also tackling the climate crisis.

Adapting to climate change requires a concerted global response. This includes leveraging innovative forms of blended finance, forging new multi-stakeholder partnerships, and incubating innovative solutions to adapt to climate impacts. Governments, businesses, investors, and innovators can partner with communities at the frontline of climate impacts, to ensure they not only survive but thrive in a climate-impacted world.

CURRENT AND PIPELINE BCP REDD+ PROJECTS: SCALING POTENTIAL :



WELCOME TO BCP MOZAMBIQUE THE GREATER LIMPOPO REDD+ PROJECT (GLRP)



The GLRP is a partnership between the Government of Mozambique, BioCarbon Partners (BCP), Peace Parks Foundation (PPF) and Eni.

The GLRP is a large scale grouped project aimed at linking National Parks, Coutadas, private game reserves/farms and cattle ranches with communal forest areas to facilitate biodiversity adaptation to climate change through the establishment of corridors (project areas) that are conserved and restored by stakeholders, tenure holders and communities with land use rights over their areas.

The GLRP project will be implemented in 12 districts under 4 provinces in Central and Southern Mozambique.

PROJECT DETAILS

SIZE: A total project area of approximately 2.9 million ha is expected to be included in the project in the first instance, and approximately 1.1 million ha in future instances.

PROJECT BENEFICIARIES:

The project will be implemented in close collaboration with central government and private sector stakeholders and is expected to benefit over 318,940 local community members through job creation, income generation, and direct revenues from carbon in addition to increased food security and livelihoods.

EMISSIONS REDUCTION: The preliminary estimated GHG emission reductions for the 30-year project span is 31,966,125tCO₂e at an annual average of 1,065,537 tCO₂e/yr.

GRAND MILESTONES IN PROJECTS DEVELOPMENT AND IMPLEMENTATION:

2027 - Completion of first VCS validation/verification and CCB triple gold.

2028 - Submission of the second MR (monitoring period 1 Jan to 31 Dec 2026) for VCS and CCB verification and completion of second VCS verification and first CCB verification.



THE PROPOSED CUANDO CUBANGO COMMUNITY FORESTS PROJECT

Our vision is a single project over multiple jurisdictions. We recently partnered together with USAID/TNC-led ECCO initiative to support the conservation of the upper Okavango headwaters in Cuando Cubango Province.

BCP is exploring the potential for a REDD+ project across this key conservation area with a potential corridor from Cuando Cubango to Kafue National Park, promoting conservation without boundaries.

Located in the Cuando Cubango Province of Angola, Phase 1 of the project proposes the forest protection of 4,086,841 hectares, with the potential for expansion outside of Cuando Cubango. The project is just about to start a Feasibility Study during 2024 ahead of development.



A smiling woman with dark skin and braided hair is operating a manual water pump. She is wearing a bright pink short-sleeved shirt under a blue wrap with a colorful, intricate pattern. She is holding the handle of the pump, which is a vertical metal post. The background shows lush green vegetation and trees, suggesting a rural or forested area. The overall tone is positive and community-oriented.

COMMUNITY IMPACTS

Climate finance is transforming the development landscape as a sustainable revenue stream that we are only just scratching the surface of. Nature-based solutions are the future for climate action and mitigation, sustainable development and biodiversity protection and restoration.

At BCP we understand that in order to address deforestation, we have to look deeper and tackle the root causes linked to the economic and social reasons behind deforestation through a credible form of conservation finance.

Under the REDD+ initiative model, across both the LZRP and LCFP a total of 230,705 people are benefiting, and the livelihoods of over 48,516 households are being strengthened through direct payments to communities from revenue from forest carbon fees, employment, and livelihood support.

COMMUNITY AND LIVELIHOOD IMPACTS IN ZAMBIA TO DATE

208

WASH
Related
Projects



27

Health
Related
Projects



67

Education
Related
Projects



84

Social
Improvement
Related
Projects



35

Hammermill
Projects



110

Village
Banking
Projects



16

Poultry
Rearing
Projects



32

Goat Rearing
Projects



1,723

Beekeeping
Farmers
Registered (In
Partnership with
Nature's Nectar)



573

Of Whom
are
Women



COMMUNITY DEVELOPMENT

HOW ONE COMMUNITY HAMMER MILL HAS STRENGTHENED HEALTH, EDUCATION AND ACCESS TO CLEAN WATER IN ZAMBIA

In the heart of Mpanshya Chiefdom, the Chimusanya Hammer Mill stands as a beacon of community success.



The Chimusanya Village Action Group identified a hammer mill as a powerful investment tool to be used toward revenue creation in their community. Carbon revenue from the Chiefdom's partnership with BCP's Luangwa Community Forests Project enabled the community to make this investment.

Serving an average of 40 customers daily, the hammer mill brings in an impressive monthly revenue of K10,000. By providing such a reliable service, it has improved the livelihoods of an estimated 500 households in the area, saving them time to focus and invest on other aspects of their lives.

The hammer mill has proven a powerful earner for the community, with profits from the hammer mill going towards several sustainable development projects, which include: reconditioning boreholes in various villages; purchasing cement and desks for the local schools; and contributing to the improvement of medical facilities in several clinics.

Investing in people = investing in our planet.

This community initiative exemplifies how a sustainable and community-centered initiative can transform lives and economically empower multiple communities. When we take action to safeguard the well-being of all people, regardless of demographic or economic background, only then can we truly mitigate and adapt to climate change.



INSPIRING THE NEXT GENERATION

CLIMATE FINANCE ENSURES BRIGHT FUTURE FOR THE PUPILS OF LUEMBE!

A bright future for Zambia's children starts with the right education!

A safe, weather-resistant, and accommodating school is pivotal to a dynamic, fun all-rounded developmental experience for any child.

As can be seen in these before and after photos, up until now, this has not been the case for over 300 pupils of Mulamba Primary School in Nyakauya Village of Luembe Chiefdom.



Before



After

Without adequate shelter and space, many classes were taught outside, where the children's attendance was often deterred by harsh weather conditions, and concentration levels challenged by noise and distractions from outside.

As a direct result of REDD+ revenue through the Luangwa Community Forests Project, Luembe Community Forest Management Group invested in the build of a brand new 1-by-3 classroom block.

Transforming the lives of these young learners, one step at a time!

Climate finance is about what we, as societies, value; the world we want to live in and the lives and hardships we can save by channeling our money to build resilience against the ravages of climate change. A fundamental part of this is ensuring indigenous communities have access to revenue to boost development, infrastructure, and livelihood initiatives, all of which bolster resilience to the negative impacts of climate change.

SUPPORTING CHANGE IN CHITUNGULU

CHINTUNGULU CFMG INVEST IN ITS COMMUNITY

Offering a snapshot into the powerful impacts of climate finance using one Chiefdom as an example, in 2023 Chitungulu, one of our 17 Chiefdom partners in the LCFP unveiled four new community projects by Chitungulu Community Forest Management Group.

These life-changing projects include:

A Market Shelter to improve the local circular economy, as it will cater to 1,551 Households to keep their products and goods shielded during the rain and from the sun!



A 1 x 3 New Classroom Block at Sempe Primary School, which will encourage a weather-resistant and resilient learning experience for its 451 students!

The construction of Staff Housing to tackle the issue of teacher retention by appealing to teachers to live in remoter areas of the country by providing robust housing.



And, finally, the construction of a sturdy Community Resource Board office to give the community's elected decision-makers a sheltered office to work from.

A REASON TO CELEBRATE IN CHITUNGULU IF WE EVER DID SEE ONE!

STRENGTHENING LOCAL INSTITUTIONS ONE VILLAGE AT A TIME!

Under our Strengthening of Local Institutions (SOLI) strategy, BCP conducts frequent capacity-building training sessions with our community partners.



An essential part of our REDD+ is empowering the indigenous communities we work with to ensure the longevity and sustainability of the projects.

In 2023, the engagement team from LZRP, with the support of the Cooperative Inspector for Rufunsa District, conducted training in Bunda Bunda Chiefdom, Lusaka Province.

The teams focused on Leadership, Financial Management, Conflict Mitigation, Record and Book Keeping, and Community-Level Project Management. These areas strengthen local governance and circular economies by providing necessary business guidance to our community partners that can be transferred beyond the LZRP community project management and applied to other business ventures.

Each session always includes REDD+ sensitization and a focus on how the BCP REDD+ Impact Model works, with plenty of time for Q&A to ensure open dialogue and conversations with our community partners, to ensure they are fully informed and feel ownership of the community project.

CLIMATE-SMART AGRICULTURE

BCP KICKS OFF CLIMATE-SMART AGRICULTURE FIELD DAYS

As part of our ambitious plans to scale food security, and build resilience at a household level through our farmer-to-farmer extension model, Field Days are a key part of this.

And nothing gets our all-star Livelihoods team more excited than Field Days.

A chance to learn, knowledge-share, and of course – an opportunity to show off those yields!

Adaptation and mitigation are crucial to defending ourselves from the destruction that climate change is inflicting on our planet. BCP, together with the Department of Agriculture is dedicated to our Climate-Smart Agriculture initiative, as a sure SMART way to adapt to the adverse effect of climate change.

Climate change's effects (increasing temperatures, weather variability, shifting agroecosystem boundaries, invasive crops and pests, and more frequent extreme weather events) can be readily felt during difficult growing seasons - either too much or too little rain. The hardest hit during those seasons are smallholder farmers. Yields suffer and by extension household food security and incomes, making it hard for families to weather these one-off and longer term events.

Climate change's negative impacts are already so severely felt, in the form of increasing temperatures, weather variability, shifting agroecosystem boundaries, invasive crops and pests, and more frequent extreme weather events. So often the hardest hit are the smallholder and subsistence farmers, whose survival hinges on the health of their crops.

The Conservation Farming practices that BCP exposes farmers to and trains them in is Climate Smart Agriculture. Unlike traditional agricultural practices it enables farmers to prepare their land prior to the first planting rains (irrespective of when those rains now arrive) - a crucial benefit that leads to higher yields, the practices also enable farmers to optimise their input and seeding operations. Finally the practices increase water capture and retention - another crucial benefit that enables farmers to again, significantly increase their yields - even during difficult growing seasons such as the one we recently experienced in Zambia.

Increased yields also means farmers do not have to expand their holdings into pristine land - lowering deforestation rates normally associated with traditional agricultural practices.

Our Field Days are used to stimulate opportunities and synergies available in the conservation agriculture extension structures between Follower Farmers and input suppliers and help identify interested and capable participants to become In-community input supply Agents; Tillage Service Providers (TSP); Crop Aggregators (CA); and Crop Buyers.



CSA IMPACTS 2023



840

Lead Farmers
Trained

1,756

Faidherbia
Albida trees
planted since
inception

17,800 +

Follower
Farmers

379,461

Gliricidia Sepium
trees planted
since inception

840

Demo Packs
Distributed in
2023

938.5

Hectares of
farm land
under CSA

132

Field Days
were hosted by
BCP in 2023

362

Farmers
Trained in
Horticulture

13,479

Farmers
attended the
Field Days

20%

Of Whom are
Women

51%

Of Whom
were Women



CREATING MARKET LINKAGES

Malama Chiefdom Secures Market and Transportation Linkages for Second Year Running



In 2022, making history in the Chiefdom with the help of BCP's market and transport linkages, 25 farmers sold a combined total of 10.928 tons of soybeans straight from their doorstep to the buyer, Kalawani General Dealers.

A year later we revisited the same community not only to find that their lives were improved as a result of this link, but that they were flourishing from even greater market connections! With these Market linkages now steadfast in the community, they've seen an increase in productivity and household income generation... which is exactly what we want to see!

Having seen the benefits from 2022, for the 2023 season, the farmers in Malama increased their soybeans production to 28.5 tons to support an estimated 260 families. With BCP once again supporting the community with transportation of the soybeans, the total money received by farmers in the community this season was K139,862.00 (roughly \$8,000+) from Mt Meru (a soybean buyer in the District).

"We have been taught how to make farming into a business. Here in Malama, we never used to grow any crops for selling because there was no market. We only used to grow enough food for our home consumption. When BCP came into partnership with the community, we were given an opportunity to uplift our standard of living and reduce on poverty levels we were so used to living in. Through the training of Lead Farmers on climate-smart agriculture and now these market linkages, our lives are changing!"

Ms. Fridah Chulu, Malama Resident and Farmer.

The revenue from the soybeans has gone towards buying more seeds and farming inputs so that the farmers of Malama can diversify their yields, ensure food security in the face of drought or flooding, and capitalize on future opportunities to access the formal marketplace.



CLIMATE FINANCE SCALES FOOD SECURITY IN TIMES OF DROUGHT

Agrifood Options Revised through Climate Finance

To feed an ever-increasing (and hungrier) global population sustainably CSA needs to be increased to align available finance with the relevance of the sector. Despite causing one-third of global greenhouse gas emissions, agrifood systems receive 4% of climate finance, with only a fifth of this going to smallholders.

Current financial flows need to be realigned in order to support a sustainable agrifood system transformation that works for everyone... and Carbon finance could be one such option!



BCP, in collaboration with the Ministry of Agriculture, has been working with farmers in an effort to address food security challenges through the farmer to farmer extension model. In an effort to respond to the country's vulnerability to climate change challenges, which directly impacts food security in the country, BCP has invested in the CF MT Climate-Smart Agriculture practices. With agriculture expansion as such a major threat to the forests, CF MT Climate-Smart Agriculture helps to provide food security and a sustainable future for some of Zambia's most nutrition insecure families.

CF MT minimizes tillage, follows the methods of crop-rotation and ultimately reduces time, labor, and the wear and tear of animal and machines substantially. From a production point of view, the most obvious and immediate result of the practices are increased yields using less land or existing holdings. There are also longer term benefits related to improved soil nutrition, and an increased soil organic pool.

Beyond these immediate and noticeable rewards, having to spend such substantially fewer hours on farming, yet producing a much higher yield (enough so that there is surplus to sell and trade) changes people's lives. Especially those of women. Food security lifts the barriers put in place by chronic hunger, while having a surplus of crops opens up a whole new area of trade and business opportunities.

Over the past three growing seasons, maize yield results speak for themselves, with yields under the CF MT practices proving 130% higher than crop established under conventional tillage practices. The higher yields in the maize crop in turn have enabled CF MT adopters to realize 168-198 % more money from that crop than was realized under conventional tillage practices. In fact, when one factors in the costs associated with growing one hectare of maize, conventional tillage farmers can lose money.

In terms of soya outcomes; the yield results from the CF farmers saw an average of 1.5 tones – representing yield increases of 60-126% higher than conventionally tilled yields from the MoA annual crop assessment. These results are transformative in nature and enable households to move away from the poverty stricken and food insecure margins that characterize the lives of many subsistence farmers.

To date we have helped train over 800 Lead Farmers in CSA methods, who have in turn have helped over 17,800 follower farmers adapt the same methods of more sustainable land-use and farming in our two established projects in Zambia. Having witnessed the significance of equipping farmers with this knowledge we are taking measures to implement CSA training in the early stage and post-verification phases of BCP's Kafue-Zambezi Community Forests Project, which is currently in its development phase in order to scale up the CSA practices in Zambia's Western Province.

In the coming year, BCP plans to scale up CSA activities in Eastern, Lusaka, and Western provinces.

THE ROLE OF BIODIVERSITY

SPEARHEADING BIODIVERSITY CREDITS BY BCP'S BIODIVERSITY MANAGER, CHARLES ALBERT PETRE



Biodiversity plays a crucial role in enhancing ecosystem resilience, ensuring that ecosystems can continue to provide essential services and adapt to changes and disturbances over time. Different species perform various ecological roles or functions within an ecosystem. High biodiversity ensures a range of functional traits contributing to ecosystem processes like nutrient cycling, pollination, seed dispersal, and soil formation. This array of functions builds stable ecosystems, which are resilient to disturbances, including climate change.

At the species level, genetic diversity helps populations survive diseases, pests, and climate variations, thereby enhancing the overall resilience of the ecosystem.

Protecting biodiversity is not only crucial for ecological health but also for sustaining economic and financial well-being globally. Natural places hold cultural significance for indigenous people and local communities (IPLCs), offering medicinal plants and traditional foods.

Approximately 17% of the world's land area is under some form of protection and IPLCs manage about 80% of the world's biodiversity. In light of the global biodiversity crisis, the Kunming-Montreal Global Biodiversity Framework (GBF) set the target to protect and conserve at least 30% of the world's terrestrial and inland water areas by 2030, with an emphasis on equitable and inclusive governance and support to the conservation efforts of IPLCs. However, experts estimate the financial gap to meet the Global Biodiversity Framework (GBF) is several hundreds of billions of dollars per year. To bridge this gap, significant efforts are required from both public and private sectors to invest in nature-based solutions.

In 2023, Verra sought projects to pilot the still-under-development Sustainable Development Verified Impact Standard (SD VISTa) Nature Framework to generate biodiversity credits that would contribute to closing the financial gap.

Out of 179 applications received, Verra selected a cohort of 31 pilot projects representing a diversity of biomes, ecoregions, land uses, and activity types.

BCP's Lower Zambezi REDD+ Project is one of the pilot projects!

The pilot's goal is to test and refine the applicability and integrity of Verra's biodiversity methodology. This new methodology will enable the independent assessment and verification of the real-world biodiversity benefits and certification of nature-positive investments. Project developers will use the methodology to quantify the biodiversity benefits of their conservation and restoration activities.

Once a project has been verified using SD VISTa's world-leading systems, companies can purchase the resulting biodiversity credits to invest in biodiversity and progress their nature-positive commitments.

We are working towards the first issuance of BCP's Biodiversity Credits at the end of 2025... and we can't wait!

BY PROTECTING NATURE WE PROTECT OURSELVES

Forests are essential for sustaining life on land by providing food, shelter, and other resources for countless species.

Demonstrating nature at its most powerful, without our forests, where would we be?

Forests play a crucial role in sustaining life on land in various interconnected ways. They serve as sacred habitats for a wide array of plant and animal species, creating, sustaining, and supporting diverse ecosystems of significant biodiversity.

We need our forests standing to combat change, as they help regulate the climate by absorbing carbon dioxide and releasing oxygen through photosynthesis. Intact trees play a vital role in the health of our soil, by preventing erosion and promoting nutrient cycling.

65

Community
Scouts

32%

Of Whom are
Women

15,377

Conservation
Days

216

Scouts employed by
CRBs with the help
from revenue from
Climate Finance
under REDD+

122

Airwing
Hours Flown

223

Number of snares
removed/recovered
from REDD+
zones


31

Arrests made
by DNPW in
REDD+ zones

18

Firearms
recovered from
illegal activities in
GMAs



A young African wild dog with large, rounded ears and mottled brown and black fur stands in a shallow, watery area with dry grass. The background is a soft-focus landscape.

Additionally, forests play a crucial role in maintaining water cycles, providing clean water for various organisms.

Sustaining life on land by providing food, shelter, and other resources for countless species... the list is endless!

Yet, the safety of our forests is at risk and habitat loss is increasing... Since 1974, elephants have declined 71% from roughly 1.4 million to 400,000, and lions have declined 90% from an estimated 200,000 in 1975 to only 20,000 today.

Africa's population is projected to double by 2050 to 2.5 billion people, meaning more than a quarter of the world's people will live in Africa. By 2100, Africa's population is projected to grow another 80% to 4.5 billion people. That is a 291% population increase in the next 79 years!

The consequence of rapid population growth combined with poverty will likely result in massive habitat loss and the continued decline of elephant, lion, and other species to remnant populations.

Africa's remaining forests are under pressure today and a further reason why there is no time to sideline forest carbon markets.

Markets for carbon offsets and access to capital are needed to close the massive funding gap to protect remaining forests, which have the ability to store a huge amount of carbon while fostering viable populations of the world's remaining biodiversity.

Carbon markets offer a proactive means and proven tool for our generation to restore and protect our life-giving African forests.

11

Vultures
observed/record
ed by BCP in
REDD zones

376

Elephants
observed/record
ed by BCP in
REDD zones

21

Hippos
observed/record
ed by BCP in
REDD zones

87

Southern Ground
Hornbill
observed/record
ed by BCP in REDD
zones

14

Lions
observed/record
ed by BCP in
REDD zones

20

Wild Dogs
observed/record
ed by BCP in
REDD zones

95

Giraffes
observed/record
ed by BCP in
REDD zones

CONSERVATION WINS IN 2023!

We've Got A lot to be proud of!

Using innovative community incentives, carbon science, and digital monitoring techniques, BCP, communities, and our Government and conservation partners are at the forefront of conservation efforts, resource protection, and ecosystem restoration.

African species still migrate through large landscapes in Sub-Saharan Africa including endangered species such as elephants, lions, and wild dogs. The Luangwa-Lower Zambezi eco-system is one of the world's last 10 remaining wildlife legacy landscapes on Earth.

Historically humans have divided land with country borders and National Parks, which in some cases actually isolates wildlife populations, putting them at greater risk of extinction. Together with the Zambian Government and our Chieftdom Partners, by protecting threatened areas of biodiversity significance, we're helping to create one of Africa's largest migration corridors, by safeguarding the wild spaces linking 5 National Parks in Zambia to conserve biodiversity connectivity for Zambia, Malawi, Zimbabwe, and Mozambique.

BCP is passionate about our conservation efforts, resource protection, and ecosystem restoration, partnering with Forestry Department, the Department of National Parks and Wildlife, and conservation organizations such as Birdwatch Zambia and Mabula Ground-Hornbill Project, Lion Landscapes, Peace Parks Foundation, The Nature Conservancy and Panthera, in our joint efforts to protect biodiversity in Zambia. BCP also works in harmony across a number of different private game reserves and supports Community Scouts through direct employment, and by supporting Community Forest Management Groups to train and retain Chieftdom Community Scouts to carry out resource protection. Additionally, BCP has a designated airwings unit to surveil the REDD+ zones from above.

In 2023 BCP supported Scouts took part in a number of First Aid Training Programs, SMART data collection training, and were proud to represent BCP in Tusk's Wildlife Ranger Challenge and in the Tangila Trail Run - with both events raising funds towards conservation locally and regionally.



5 WHITE-BACKED VULTURES AND 1 WHITE-HEADED VULTURE TAGGED

Based at Conservation Lower Zambezi, implemented with Bird Watch Zambia and Endangered Wildlife Trust, the monitoring of these critically endangered Vultures covers Lower Zambezi National Park and Chiawa GMA. The results have tracked the Vultures movement mostly within the landscape. They have also tracked their movement in the Luangwa Valley to Mana Pools, abattoirs around Harare, Hwange National Park in Zimbabwe, and even as far as the Okgo Delta in Botswana, and to Mozambique.



AERIAL SURVEYS AND FLIGHT TRANSECTS YIELD AMAZING RESULTS



- Our first ever aerial survey of megaherbivores in the Lower Luangwa Valley revealed high densities of elephants (1.5 ind/km²), buffalos (1.2 ind/km²) and hippos (8.5 ind/km of river) comparable to those of National Parks.
- Implemented by Indi-Eco, with participation of Nyamvu, Munyamadzi and Kazumba Game Reserves, we conducted aerial surveys over 123.9 kms of the Luangwa River from the Southern boundary of South Luangwa NP to Kazumba Game Reserve, which found a density of 8.5 hippo/km and 3.9 crocs/km on average.

- With the same partners, we conducted flight transects over 292.8 km² sampled found population estimates of 356 buffalos and 432 elephants.



GIRAFFE COUNT

Participation in a range-wide census of the endemic Thornicroft's Giraffe in Nyakolwe Chieftdom, managed by Giraffe Conservation Foundation



WILDLIFE RETURNS TO RUFUNSA CONSERVANCY



Rufunsa Conservancy was buzzing with wildlife in 2023:

- Lions returned for the second year in a row, and at least two prides of lions were spotted in 2023!
- We had our first witness of Elephant in the Conservancy since the LZRP started, with tracks and dung to support the sighting.
- There were multiple sightings of Leopard spotted in the Conservancy.

WILD DOG DISPERSAL

Once again, we witnessed the long distance dispersal of collared wild dogs through most of the Luangwa valley up to the Lower Zambezi valley using BCP REDD+ zones.



REHABILITATION OF CHINZETE WILDLIFE CAMP

In March 2023, BCP together with Government officials from Rufunsa, councils of Mpanshya Chiefdom, and Senior Representatives from the Department of National Parks and Wildlife (DNPW), officially opened the newly renovated Chinzete wildlife camp in Lusaka District.



The Department of National Parks and Wildlife truly is one of our longest-standing and closest allies and among our most valued conservation partners.

The skills, knowledge, training support, and manpower on deployment that BCP receives from DNPW are invaluable to BCP's mission of making the conservation of wildlife habitat valuable to people. Supporting Scout and Ranger facilities, such as this one, bolsters the Department's ability and proximity to protect Zambia's wild spaces (including REDD+ protected areas that BCP Scouts patrol with the Department).

In 2022, BCP's Luangwa Community Forests Project welcomed 5 new Chiefdoms to the project, once officially verified this year, excluding the waterfront, 67% of The Lower Zambezi National Park will soon share a protected boundary with BCP projects. As such the LCFP will protect over 1.2 million hectares of threatened biodiversity significant landscapes, and Zambia's greatest asset – our forests. Over the next 2 years, the expansion of the LCFP is to be accelerated with an additional 1 million hectares in 2 years for delivery by 2025.

The opportunities created by climate finance under REDD+ are vast.



PASSING OUT PARADE

2023 wrapped up with BCP welcoming 47 new Community Scouts (8 female and 39 male) to the BCP conservation team!

Coming from Chiefdoms across the LCFP, the newly graduated recruits are proudly represented by Jumbe, Nsefu, Mnkhanya, Luembe, Chitungulu, and Mwanya Chiefdoms... and for the first time ever, BCP-supported Community Scouts graduated from Kazembe, Chembe, Mboroma, and Mwape Chiefdoms.

The Passing Out Parade took place at Nyamaluma Wildlife Training School after months of rigorous training conducted and overseen by the Department of National Parks and Wildlife, one of our most valued [#ConservationPartners](#)

Putting communities at the heart of resource protection, and having the intel, knowledge, and local understanding from our Community Scouts goes a LONG way in protecting Zambia's wild spaces.

These dedicated Scouts serve as our eyes and ears on the ground, playing a crucial role in safeguarding our natural environment – we salute you all!



WE ARE BCP

BCP has a world leading team of carbon and biodiversity scientists; exceptional community engagement teams; informed policy experts, diverse technical leads; and a host of other professionals, whom together make up our dynamic, passionate and outstanding team of climate action go-getters! Collectively the team has sourced over 2m ha of community land for inclusion in Verified REDD+ projects; completed 15 VCS Verifications; and 3 CCB Verifications to Triple Gold level. At the heart of what we do at BCP, are our BCPeople. An exceptional group of phenomenal individuals, their knowledge, skills, expertise, zest for conservation, and passion for making a difference is what drives us to achieve our mission. With such an extraordinary team, we were able to make the leap in 2023 across national borders, into Mozambique, exporting the skill sets learned and developed by our Zambian team.

258

People are on BCP's Payroll

30%

Of whom are female

95%

of our Team are Zambian citizens

98%

Of our Team are African-born

67%

Of our Work Force classify as Youth

130

Of our Team are in-Chiefdom hires

10

Offices across Zambia ensuring close basis to our community partners



PROUD TO BE BCPEOPLE

ZIKOMO KWAMBIRI!



Once a year we all come together from across Zambia to celebrate BCP's annual Zikomo Day. An occasion to celebrate the heart and soul of who we are – our BCPEOPLE!

A morning of team-building activities, festive fun, and some competitive spirit was shared by all at Tiffany's Canyon.

Before we all got glammed up for the Gala evening and awards part of the day.

Joined by 15 of our 17 LCFP partner Chiefs, as well as representatives from the Forestry Department/Ministry of Green Economy and Environment - Zambia and Department of National Parks & Wildlife, this Zikomo Day was made all the more special as we celebrated BCP's Environmental Finance Voluntary Carbon Market Rankings with our partners.



Our most prestigious award of the evening went to Malama Chiefdom for its devotion to community.



Always a close race, without further ado, please join us in congratulating our Zikomo Day Winners in 2023:

First up, for our Verification award, the award went to Manson Libayi, and our Runner-Up was none other than Zerks Mwale.

The Brand Promise award went to Paul Lungu, and BCP's Agriculture Team came in as Runner-Ups.

Next up, our Most Improved Award went to Penelope Chilo, while Brian Ruzvidzo was Runner-Up!

Our Roots Award went to David Nkisi, while Christine Mataka came in as Runner-Up.

Last, but certainly not least, the most prestigious award of the evening, The Carey Eaton Award was bestowed upon Gloria Hacamba, with Mundia Akende as our Runner-Up!

Congratulations to all of our winners and to our BCPEOPLE for another exceptional year of Making Conservation of Wildlife Habitat Valuable to People.



UN SUSTAINABLE DEVELOPMENT GOALS

Our Commitment to our Planet: BCP currently aligns with 16 out of the 17 UN Sustainable Development Goals, with our goal to meet all 17 by 2030.



NO POVERTY

In partnership with local communities in Zambia, BCP uses the REDD+ mechanism to create a sustainable model where communities receive performance-based, Forest Carbon Fees for any activities that protect their forests and the wildlife inhabiting these forests. BCP reduces social and economic risk through the monetization of carbon and other livelihood interventions.

ZERO HUNGER

BCP, in collaboration with the Ministry of Agriculture, has been working with farmers in an effort to address food security challenges through the farmer to farmer extension model. In an effort to respond to the country's vulnerability to climate change challenges, which directly affects food security in the country, BCP has invested in Climate-Smart Agriculture technologies. With agriculture expansion as such a major threat to the forests, Climate-Smart Agriculture helps to provide food security and a sustainable future for some of Zambia's most nutrition insecure families



Forest Carbon Fees generated from the sale of BCP's verified carbon credits are invested into community development projects that will support upliftment of the community as a whole. Health care facilities such as clinics have been built to support our community partners to allow for easier access to necessary healthcare when required. Community partners have also been supported with the procurement of boats for easier access to health care as well as the installation of WASH (Water and Sanitation) projects that support the health and well being of the community.



QUALITY EDUCATION



Through Forest Carbon Fees Educational facilities such as schools and teachers' houses have been built to support our community partners to allow for easier access to education. Building teachers' houses is necessary to attract and retain good quality and qualified teachers to support educational needs.

BCP also supports the upliftment of community partners through the training, equipping and compensation of BCP supported community scouts. This provides community partners with skills development and the opportunity to support higher education for financial success of our community partners.



GENDER EQUALITY



Gender equality is at the forefront of BCP's project and company goals. At the Community Forest Management Group planning level, meetings are run in a way that women are specifically included in the decision making process.

Despite cultural norms that make resource protection predominantly a male role, BCP's projects are managing to attract women into community scout roles. A large part of the role of the community scouts will be to engage local communities in biodiversity conservation issues. We believe that female Community Scouts will have a better understanding of the needs of local women and the factors governing their decision making. Women will be better at engaging other local women within their communities.

Under BCP's Climate-Smart Agriculture Initiative, we actively encourage women to take the lead as Lead Farmers or take part as Follower Farmers to ensure at a household level that women are part of strengthening their family's food security, and have access to food and income.

The REDD+ benefit-sharing mechanism is designed to give women equal rights and equal access to economic resources. More than half of the beneficiaries are currently women. Elections of the CFMG members are democratic. According to the Zambian Constitution, a minimum number of women are to be included on any committee or board ensuring the women will be represented.



CLEAN WATER AND SANITATION

Forest Carbon Fees generated from the sale of verified carbon offsets are used to fund Community development projects supporting sanitation and access to clean water. BCP's project zones safeguard two vital river systems, namely the Luangwa and Zambezi watersheds, which protect and feed their respective ecosystems. By protecting the forests that support these rivers, we are supporting these critical water related ecosystems.

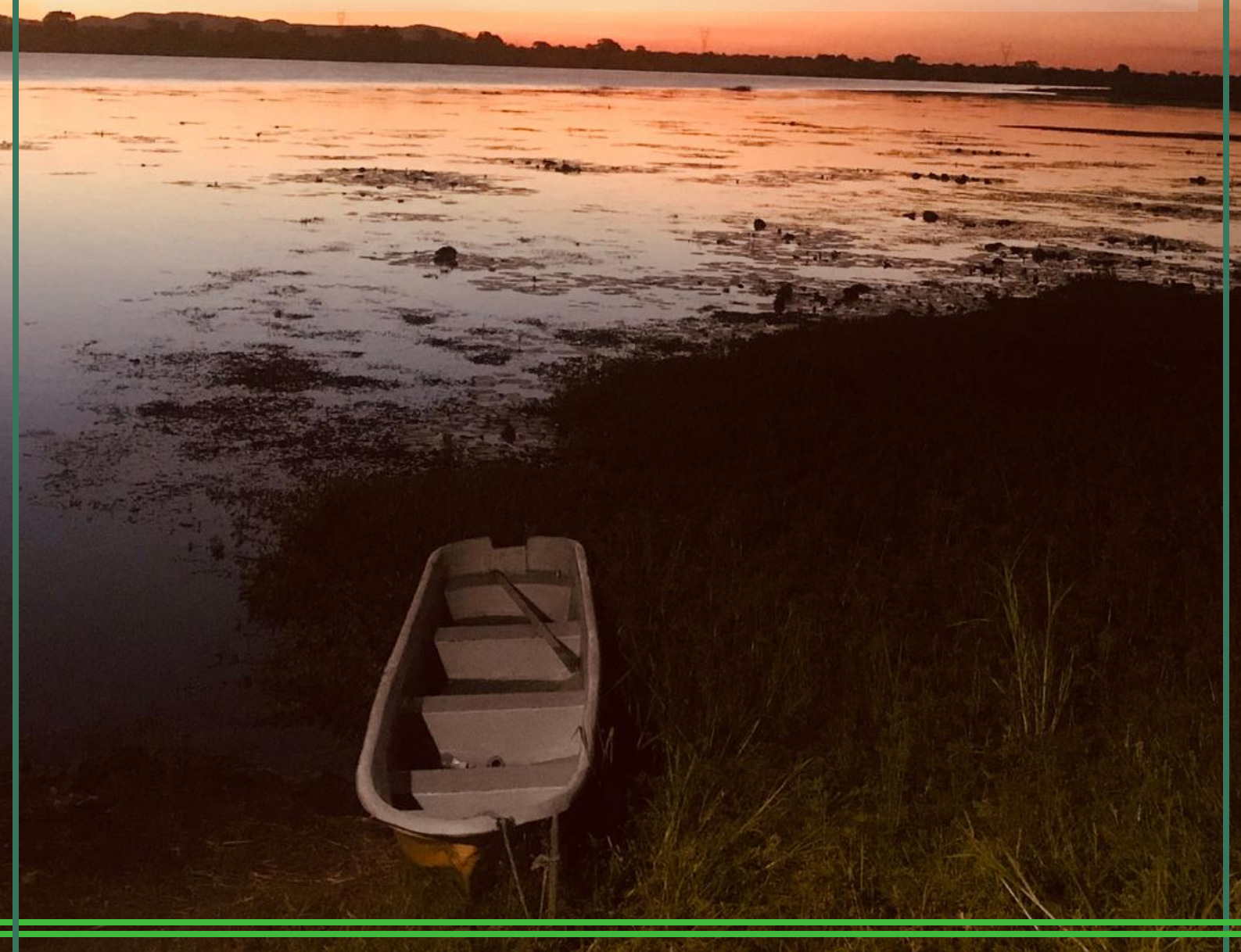
AFFORDABLE AND CLEAN ENERGY

It's estimated that only 28% of Zambians have access to electricity, leaving charcoal as the source of cooking and heat. Charcoal production is also one of the primary income sources for many rural Zambians.



BCP created Eco-Charcoal in response to the clear need to create a legal, sustainable alternative product for the Zambian market. Eco-Charcoal is sustainably produced to protect Zambian forests. It is 100% pure and natural and burns 20% longer than regular charcoal. It is produced using a modern method that reduces harmful smoke and emissions during use, which reduces the risk of harmful inhalation by its users.

Forest carbon fees generated from the sale of verified carbon offsets fund solar installation for community beneficiaries, particularly for educational facilities.





DECENT WORK AND ECONOMIC GROWTH

BCP is creating jobs at a community level to support increases in household income and economic growth. Community jobs are created for positions such as BCP supported Community Scouts, members of the Forest Monitoring Team and community teacher positions.

BCP's livelihood initiatives, such as village banking schemes, goat and poultry rearing, climate-smart agriculture and sustainable honey production all better enhance communities output and development opportunities to join markets and experience economic growth.

Through projects funded by forest carbon fees, we have calculated that over 2,000+ additional income generating opportunities are being created within the communities to support the projects... with thousands more predicted to be created under KZCFP and BCP's expansion internationally.



INDUSTRY, INNOVATION AND INFRASTRUCTURE

The REDD+ mechanism used to develop BCP's carbon offsetting projects is designed as an innovative solution to help rural community members in Zambia to see and realize tangible value from keeping their forests alive. BCP pioneered REDD+ in Zambia with the Lower Zambezi REDD+ Project being the first REDD+ Project in Zambia. BCP also supported the first communities in Zambia to gain access to their carbon rights and to benefit from carbon trade.

The additionality aspect of the REDD+ model adds further value to the mechanism through supporting social and environmental/conservation benefits. Audited and verified standards include VCS, CCB, IETA and BCorp.

Forest carbon science innovation supports technology and industry development within developing countries such as Zambia and supports rural communities gaining access to global markets through impactful livelihood initiatives.



REDUCED INEQUALITIES

BCP's projects and the corresponding benefit sharing mechanisms are designed to allow equal opportunities and reduce inequality for all community partners. Beneficiaries are incentivized both directly and indirectly through the community value creation package for activities that support the protection of forests and wildlife.

BCP's projects are supporting increased household income, infrastructure development and foreign investment into developing countries in Africa such as Zambia.



RESPONSIBLE CONSUMPTION AND PRODUCTION

REDD+ is a mechanism designed to "Reduce Emissions from Deforestation and Forest degradation". This offsetting model is designed to promote sustainability and the preservation of natural resources. BCP sells verified carbon offsets generated from REDD+ projects that we directly develop to buyers in the voluntary carbon market. BCP directly supports sustainable practices through its core business by selling carbon offsets verified against international standards to buyers in order to support the end user's sustainability goals.

As a company, we have led by example and promoted sustainability by being one of the first companies globally to offset more carbon than emitted since the company's formation. BCP has been Climate Positive for 9 years.



SUSTAINABLE CITIES AND COMMUNITIES

Through the mobilization of Forest Carbon Fees generated from the sale of verified carbon offsets from BCP's projects, communities are able to develop infrastructure and support livelihood initiatives that make community settlements inclusive, safe, resilient and sustainable.

Climate-Smart Agricultural techniques passed on to community partners helps to reduce environmental impact as well as support an oversupply of crop for market entry.



CLIMATE ACTION

Forest carbon offers one of the most significant and cost-effective solutions for climate action in the coming decade.

Research indicates that forests and other natural climate solutions (NCS) are capable of providing up to one-third of climate mitigation needed by 2030 (2021 State of the forest carbon finance).

BCP's projects are directly addressing climate change through REDD+. The model is replicable and scalable and our projects have been verified through international auditors and against international standards to be reducing approximately 1.7 Million Tonnes of carbon emissions from being released into the atmosphere on an annual basis.

At a project level, community partners are educated and sensitized on the importance of climate action and our projects support climate smart agricultural techniques as well as other livelihood initiatives that involve the sustainable management and use of forest resources such as honey production and climate-smart agriculture.

LIFE ON LAND



Both of BCP's projects link together to protect over 1 Million hectares of contiguous wildlife corridor extending from the Luangwa to Lower Zambezi ecosystems.

The LCFP acts as an important protective buffer to the South Luangwa, North Luangwa, Luambe, Lower Zambezi, and Lukusuzi National Parks, providing safe habitat and protected migration paths for wildlife. This important stretch of land is home to threatened species such as lions, wild dogs and elephants.

BCP will only choose to operate in zones that hold high ecological value and considered to be legacy landscapes in terms of threatened biodiversity. As much as social benefits are important to BCP's mission, conservation of wildlife strongholds are equally as important. In order to provide the security required to protect these zones, BCP supported community scouts are deployed to address encroachment as well as wildlife crime. Scouts are also trained to identify wildlife and log this important data on handheld devices as part of their line of work. Aerial patrols are also conducted in order to keep a look out for encroachment and poachers from the skies.

As already explored in this report, we have witnessed a host of biodiversity wins over the previous years as a result of our REDD+ model and adhering to the CCB standards.





PEACE, JUSTICE AND STRONG INSTITUTIONS

The REDD+ mechanism used to develop BCP's carbon offsetting projects is designed as an innovative solution to help rural community members in Zambia to see and realize tangible value from keeping their forests alive.

BCP pioneered REDD+ in Zambia with the Lower Zambezi REDD+ Project being the first REDD+ Project in Zambia. BCP also supported the first communities in Zambia to gain access to their carbon rights and to benefit from carbon trade.

The REDD+ model is designed to support decentralized forest management. In order to support this, BCP supports the establishment of effective institutions (CFMGs) through Forestry Department in order for communities to effectively manage their own forests. Further to the support of the establishment of these institutions, BCP supports the effective capacity building and strengthening of these institutions in order for CFMGs to define, plan and achieve their own development objectives on an inclusive and sustainable basis through effective Annual Work Planning, risk mitigation and development tools, and through the establishment of robust Forest Management Plans.



PARTNERSHIPS FOR THE GOALS

The development of BCP's projects have attracted foreign investment into Zambia, a developing country in Africa.

The financial resources continue to be mobilized through the annual disbursement of Forest Carbon Fees from the sale of verified carbon offsets that uplift and develop rural communities in some of the most impoverished areas in Zambia.

Community livelihood initiatives are intended to create a "beyond subsistence" mechanism that allows community beneficiaries to create income from sustainable sources that protect and conserve trees in their community forests.

BCP partners closely with the Zambian Government, particularly the Forestry Department and Department of National Parks and Wildlife, to support the Zambian Government to achieve Zambia's sustainability goals.

REDD+ is paramount to achieving the necessary NDC targets by 2030.



HIGH INTEGRITY OFFSETS THAT YOU CAN TRUST



The 2021 Environmental Finance's Voluntary Carbon Market Rankings saw BCP take centre stage. The LCFP was voted the Best Individual Offsetting Project, BCP was awarded the Best Monitoring/Impact Report, and BCP was announced Runner-Up in both Best Project Developer, Forestry and Land-Use, and Best Project Developer Overall.

In 2022 BCP was announced the Best in the World once again for our impacts with our Impact Report awarded the Best in the World.

In 2023 LCFP was once again been voted as Best Individual Offsetting Project, while BCP has taken home the Gold for Best Impact Monitoring Report and Best Offsetting Project - Biodiversity.



IETA

Proud IETA members as of February 2024

Awarded ICROA Accreditation in 2024



The LCFP and LZRP were both listed as NCS Lighthouses by the World Economic Forum as exemplary examples of how REDD+ projects work.

We are proud to share that as a result of our continued dedication to our employees, and to upholding our environmental and sustainable responsibilities to better our planet, that BCP ranked in the top 5% of B Corps of over 5,000 companies globally, earning us the title of "Best for the World Honoree" for our rating of 150+.



In 2022 BCP was selected as the Energy Globe Award Winner in Zambia!



Both of BCP's REDD+ Projects have been verified against the Verified Carbon Standard, The world's leading voluntary GHG program.



Both of BCP's REDD+ Projects have achieved The Climate, Community and Biodiversity Standards (CCB Standards) Triple Gold for exceptional community impact.



Our goal is to align with the IFC Performance Standards and to support all 17 of the UN Sustainable Development Goals by 2030 (BCP currently supports 16 out of the 17 SDG's).



BCP PARTNERS

BCP is a multi-award-winning leading Carbon Project Developer in Africa. Whom, together with The Ministry of Green Economy and Environment (MoGEE) and the 18 Chiefdoms it partners with in the Luangwa to Lower Zambezi valleys, is driving a new form of conservation finance that unites the community, wildlife, and climate positivity under the UN's REDD+ benefit-sharing model. We would not be able to do this without our partners.

This page is dedicated to them:



LOWER ZAMBEZI
REDD+ PROJECT



LUANGWA COMMUNITY
FORESTS PROJECT



KAFUE-ZAMBEZI
COMMUNITY FORESTS PROJECT

In cooperation with local community members in Bunda Bunda Chiefdom and The Soli Shamifwi Royal Establishment, BCP partners with:

Mweshang'ombe Cooperative, Liyeyelo Cooperative, Chakanda Cooperative, and Chilimba Cooperative.

LCFP is implemented in partnership with the following Chiefdoms:

Chitungulu Chiefdom, Nsefu Chiefdom, Jumbe Chiefdom, Mnkhangya Chiefdom, Malama Chiefdom, Msoro Chiefdom, Sandwe Chiefdom, Luembe Chiefdom, Nyalugwe Chiefdom, Shikabeta Chiefdom, Mpanshya Chiefdom, Mwanya Chiefdom, Chiawa Chiefdom, Kazembe Chiefdom, Mburuma Chiefdom, Mpuka Chiefdom and Mwape Chiefdom.

The Barotse Royal Establishment



Ministry of Green
Economy and
Environment



Ministry of
Agriculture



PEACE PARKS
FOUNDATION

The Nature
Conservancy



Ministry of Chiefs and Traditional Affairs
A Smart And Value-Centered Public Service



Nyakolwe Game Reserve



Mills Foundation



**BIOCARBON PARTNERS
UNIT 3 LEOPARDS HILL
BUSINESS PARK,
LEOPARDS HILL ROAD,
PO BOX 50830.**



www.bcp.earth



hello@biocarbonpartners.com



[@biocarbon_partners](https://www.instagram.com/biocarbon_partners)



[@BioCarbonPartners](https://www.facebook.com/BioCarbonPartners)



[@BCP \(BioCarbon Partners\)](https://www.linkedin.com/company/BCP%20(BioCarbon%20Partners))

