



Kafue-Zambezi Community Forests Project

An Indigenous Community Partnership

In the floodplains of Western Zambia, where the Zambezi River carves a lifeline through grasslands, forests, and wetlands, the Lozi people of Barotseland have lived in harmony with nature for generations. Their traditions, livelihoods, and culture so deeply intertwined with the health of the land and water.

The KZCFP builds on this heritage, placing the Lozi at the center of one of Africa's most ambitious nature-based solutions. It is more than a conservation project, it is a partnership that blends Indigenous knowledge with a science based on nature based solutions to secure a future where people and the planet thrive together.

Spanning 16 districts in Western Province, with planned expansion into four additional provinces—North-Western, Copperbelt, Central, and Southern—KZCFP is set to become the largest REDD+ project in the world, measured not only by its size but by its social impact. At its heart, it aims to protect the forests and rivers that sustain life, while empowering the communities who have stewarded these landscapes for centuries.

1,732,202

Total hectares of
forest protected
to date

15,083

Households
Benefiting from
Forest Carbon Fees

84,064

Beneficiaries

43,450

Of Whom are
Women

401

Lead Farmers

8,424

Follower Farmers

400

Bicycles
Distributed to
Farmers

1,200

Bags of Fertilizer
Distributed

801

Bags of Seeds
Distributed

192

Horticulture Farmers

31

Trained
CFMGs

What KZCFP Will Deliver

- **Massive Forest Protection:** Safeguarding vital forest catchment areas of the Zambezi and Kafue Rivers—essential lifelines for ecosystems, agriculture, and millions of people.
- **Wildlife Corridor Restoration:** Enhancing connectivity across the Kavango-Zambezi Transfrontier Conservation Area (KAZA TFCA), anchored by Kafue National Park. This will ensure uninterrupted wildlife movement and protect iconic species through secure migratory pathways.
- **Climate Impact at Scale:** Targeting an annual reduction of around 1 million tonnes of carbon emissions through forest protection and restoration—delivering measurable results in the global fight against climate change. The project is designed under the VCS standard with plans to transition to the new consolidated VM0048 once released.
- **Community-Led Conservation:** Empowering rural communities through the formation of joint Project Oversight Committees (POC), Community Forest Management Groups (CFMGs) and Community Resource Boards (CRBs). These structures will oversee forest governance and ensure equitable benefit sharing.
- **Sustainable Finance for the Future:** Harnessing carbon markets to generate long-term, performance-based financing for conservation and development.

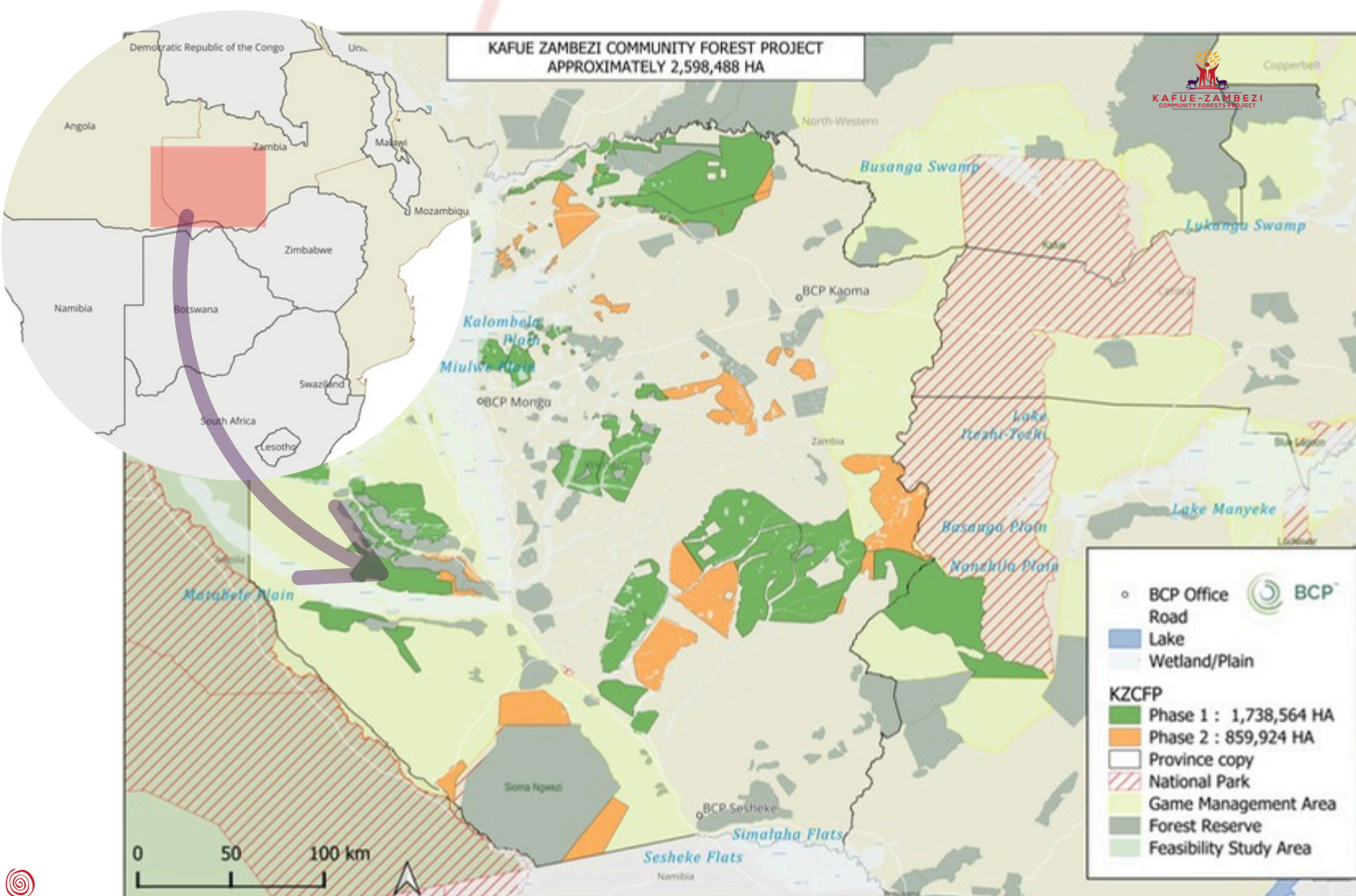
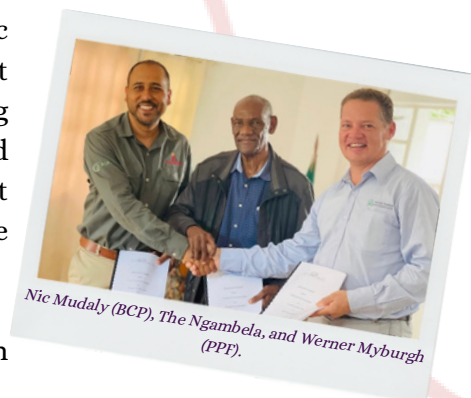


A Game-Changer in Global Conservation

The KZCFP is built on a foundation of partnership, innovation, strategic planning, and global ambition. At the core of the project is a commitment to blend knowledge and technology-driven monitoring—leveraging advanced satellite imaging to enable real-time carbon tracking and habitat health assessments. This scientific approach ensures the project remains transparent, measurable, and adaptive in the face of climate change.

Its phased implementation strategy is designed to minimize verification risks while maximizing long-term success. By carefully staging activities, the project can build capacity, refine methodologies, and scale its impact sustainably. This approach positions KZCFP not only as a model of climate action but as a trailblazing initiative destined to become the most expansive REDD+ project on Earth—not just in geographic scale, but in its transformative effect on people and nature.

Through the protection of Zambia's forests, KZCFP will conserve biodiversity in some of Southern Africa's most threatened habitats. It will enhance climate resilience, secure water resources, and support hundreds of communities through improved livelihoods and sustainable development opportunities. Most importantly, KZCFP will stand as a global example that people and the planet thrive best together. This is conservation with a purpose—guided by science and rooted in the values of equity, sustainability, and bold ambition.





Supporting Livelihoods and Social Infrastructure (SOLI)

A core aim of BCP's projects is to expand partner communities' access to essential social services, such as education, healthcare, and clean water—services that are foundational to well-being and development. By investing in these areas, BCP directly supports resource-constrained public sector departments and frontline ministries, helping to bridge infrastructure and service delivery gaps that would otherwise remain unmet. In doing so, we also contribute to Zambia's broader national priorities, including targets under the 8th National Development Plan and Vision 2030.

Through our Social Impact strategy, BCP supports Community Forest Management Groups (CFMGs) in building the soft and technical skills required to manage their roles effectively and responsibly. This ensures that revenues from forest carbon are directed toward the development priorities that communities themselves identify.

To date, BCP has trained 31 CFMGs in conducting structured Needs Assessments, an important step that enables informed, inclusive decision-making around which community projects to prioritize. Once projects are identified, BCP's engagement teams work with CFMGs to develop essential project management tools, including:

- Project work plans
- Community development budgets
- Monitoring frameworks.

These tools allow for clear tracking of project implementation, early identification of delays, and proactive resolution of challenges.

In addition to project planning, BCP has trained CFMG leaders on governance, roles and responsibilities, and accountability to their communities. Treasurers receive focused training in financial management, ensuring that carbon revenues are managed transparently, efficiently, and in alignment with community expectations.

This combination of skills transfer, local empowerment, and collaborative planning is helping CFMGs turn climate finance into tangible, community-driven development outcomes—supporting both people and planet.

