

# Luangwa Community Forests Project

Our multi award-winning Luangwa Community Forests Project works to address key drivers of deforestation while also benefitting local communities by reducing poverty, creating sustainable incomes, improving social services, and encouraging conservation.

REDD+ benefits go beyond climate mitigation and directly benefit communities in our project areas that are most impacted by climate change.

We know that forests are our lungs and are critical in regulating our climate. We believe REDD is a crucial tool to keep African forests standing. The carbon market has the potential to transform the landscape of forest conservation as a viable way to conserve existing dryland forests, working in parallel to offer Indigenous communities options to build resilience as they transition to climate-smart alternatives.

Ecosystem destruction continues to accelerate year on year. Unlike some credit types, REDD has the potential to benefit people TODAY, and we can demonstrate substance through our impacts.

**2,137,405**  
Total hectares of forest protected

**49,379**  
Households Benefiting from Forest Carbon Fees

**232,530**  
Beneficiaries

**116,710**  
Of Whom are Women

**9,383,458**  
Tons of carbon dioxide emissions reduced since inception

**386**  
Community Projects since Inception






## From Forests to People: Impact at Scale

**\$15 Million**

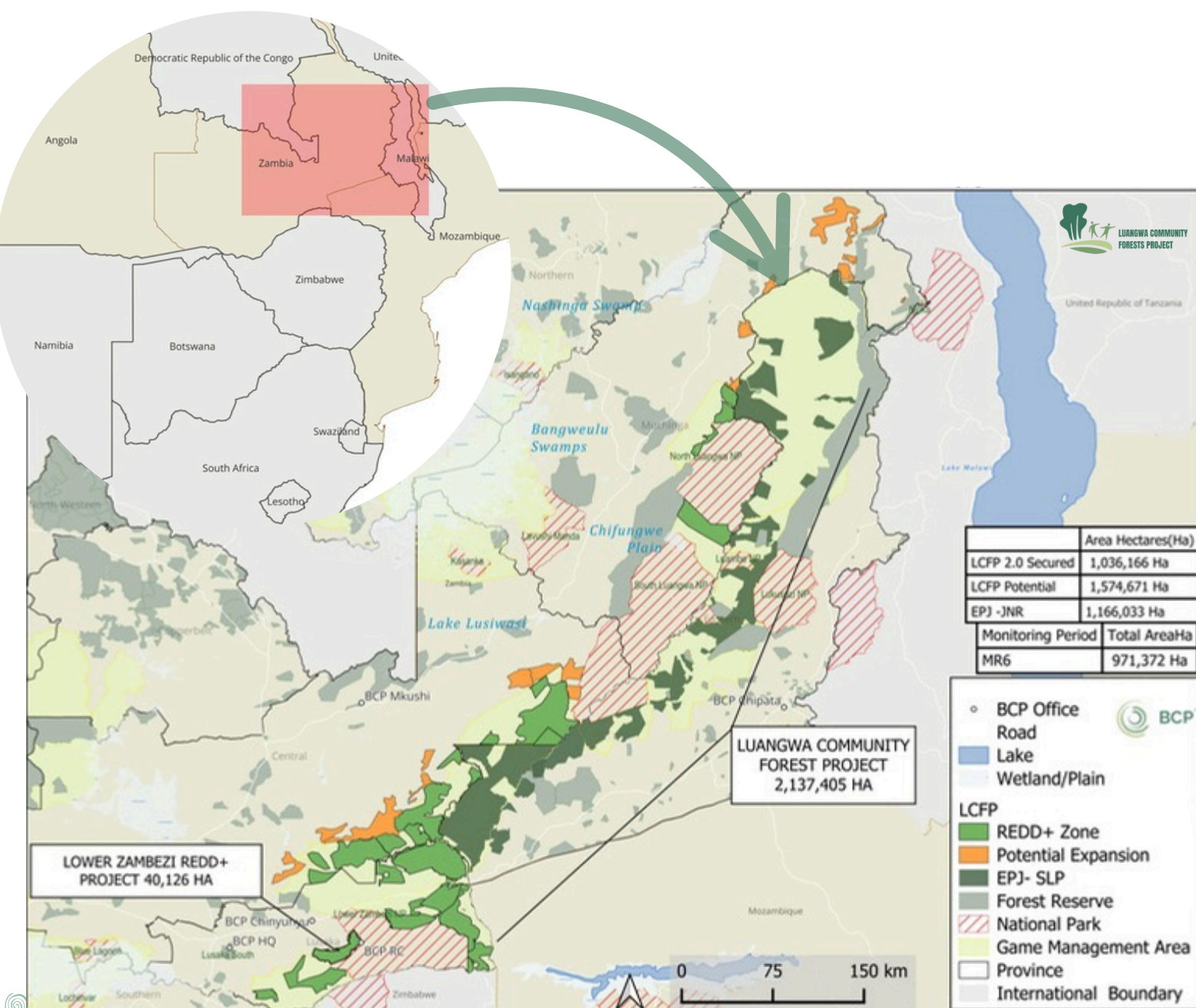
Distributed through direct payment

**237**

Livelihood Projects since Inception

As the population of our warming climate grows there is an imminent need to intensify our adaptation to climate-smart initiatives. The actors and beneficiaries are our local communities, institutions, and partners, all of whom play a critical role in the BCP mission. Our projects have been our testament to a transforming green economy through carbon finance.

Direct payments and livelihood restorations positively resulted in a steady increase in household income, job creation, and essential services, all while conserving some of the world's last remaining legacy landscapes that are home to critically endangered species.





# Luangwa Project Largest CCB Triple Gold Verified REDD+ Project in the World

BCP's first REDD+ initiative, the Lower Zambezi REDD+ Project (LZRP), was the first in Africa and second globally to achieve Triple Gold verification under the Climate, Community & Biodiversity (CCB) Standards. Our second REDD+ project, the Luangwa Community Forests Project (LCFP), has now joined this prestigious club—covering over 2.1 million hectares and benefitting 230,000+ people in 2024, **it is the largest CCB-verified REDD+ project in the world.**



The CCB Standards, developed by the Climate, Community & Biodiversity Alliance (CCBA), ensure projects deliver not just carbon reductions, but meaningful co-benefits for people and nature. To achieve Gold Level, projects must exceed baseline requirements by demonstrating exceptional impact on climate resilience, community well-being, and biodiversity conservation.

BCP's REDD+ projects are designed with deep community inclusion at their core—delivering job creation, income generation, and capacity building. LCFP alone has created over 2,000 income opportunities, alongside direct employment through our field offices and forest protection teams.

By embedding governance training, livelihood support, and equity-based engagement, BCP is working to build REDD+ projects that are sustainable, inclusive, and locally led.

These achievements reinforce our belief that climate action must also deliver for people and biodiversity—and that's exactly what our projects are designed to do.





# The LCFP has generated \$15 million in Carbon Fees for Communities over the last five Years

*At BCP, our mission is simple yet powerful: to make wildlife habitat conservation valuable to people. Central to our mission are the people themselves—our dedicated BCP staff, our government partners, and, most crucially, the communities led by their Royal Highnesses who choose to make a difference.*



At BCP we believe that people must benefit first and foremost, and that transparency is key, and all communities receive independently audited benefit sharing certificates.

BCP was proud to present ZMK53 million to the communities of the LCFP as part of their direct benefit share, with ZMK6.5 million allocated as voluntary payments to our valued partners in the Forestry Department (FD) and the Department of National Parks and Wildlife (DNPW). Bringing our total payment to communities over the last five years to +\$15 million.

This also marked the first carbon payment to the Luangwa Community Forest's five additional Chiefdoms—Mpuka, Mburuma, Chiawa, Mwape, and Kazembe.

The LCFP is a thriving success story, bringing much-needed revenue to the state and to communities deeply affected by climate change. Together, we are building classroom blocks, WASH facilities, clinics, social projects, and many more.

We are exceptionally proud of the firm commitment made by our Luangwa Community Forest partners. Tapping into all that climate finance has to offer us shows innovation, resolve, and aspiration. This disbursement goes towards an even brighter future for Zambia.

**66**

Education  
Related Projects  
Since Inception

**538**

Beekeepers Trained  
Since Inception

**11,045**

bee hives  
manufactured and  
delivered to project  
beneficiaries

**20,943**

KGs of Honey  
Harvested Since  
Project Inception

**180**

Village Banking Projects Since Inception

**82**

Social Projects  
Since Inception

**192**

WASH Projects since  
Inception

**800**

Lead Farmers

**302**

Of Whom are  
Women

**16**

Solar Projects To Date

**27**

Health Related Projects Since  
Inception